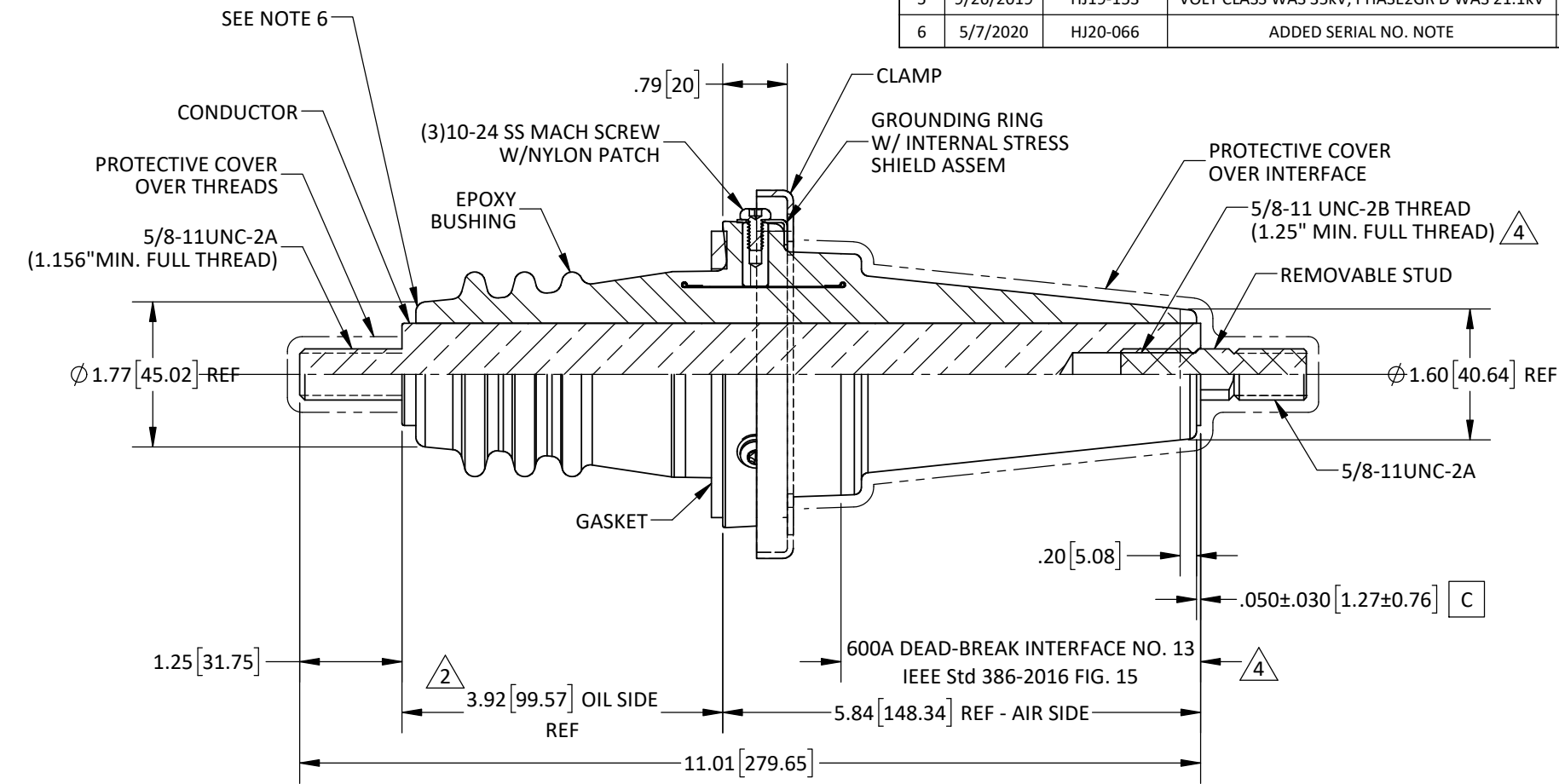
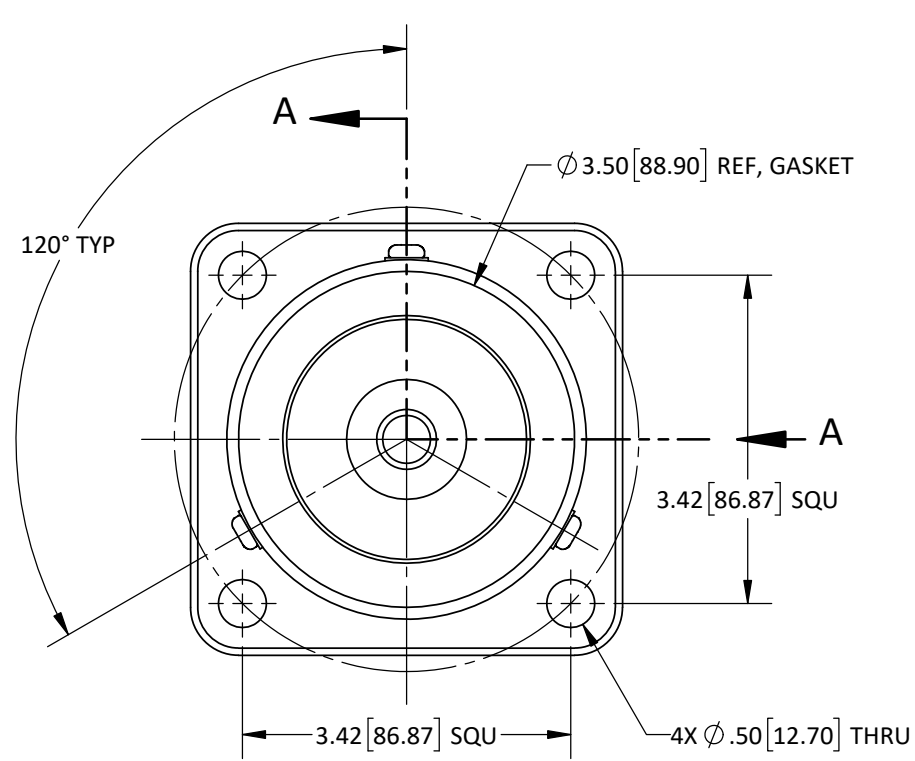


REVISIONS					
REV.	DATE	ECN #	DESCRIPTION	BY	APP'D
1	9/30/2016	PQI#I0013267	CHG'D AMP RATING, WAS 600A -TO- 900A	TJF	CJT
2	5/21/2019	HJ19-062	REMOVED .17 DIMENSION FROM SHOULDER OF CONDUCTOR TO EPOXY; MADE 3.92 DIM REF	MAD	CLS
3	5/28/2019	I0022534	ADDED TEMP RANGE AND E07 MATERIAL	MAD	CJT
4	9/26/2019	HJ19-129	UPDATE IEEE Std TO 2016, TAP WAS 1.00"	CLS	LO
5	9/26/2019	HJ19-153	VOLT CLASS WAS 35kV, PHASE2GR'D WAS 21.1kV	CLS	LO
6	5/7/2020	HJ20-066	ADDED SERIAL NO. NOTE	MAD	BG



SECTION A-A

- NOTES:
1. ALL CONTACT SURFACES TO BE CLEAN AND FREE FROM FLASH
 2. THREADS TO BE CONCENTRIC WITH 3.00" DIA ± .010 T.I.R.
 3. RECOMMENDED TANK HOLE SIZE IS Ø2.62" [66.55mm]
 4. DO NOT TAMPER WITH SCREWS IN GROUNDING RING

5. [C] - CRITICAL CHECK

6. SERIAL INFORMATION TO BE MARKED ON RIM, USING THIS FORMAT: "YEAR/MONTH/DAY/PRESS#/SHIFT/SHOT#"

MATERIALS:
 BUSHING: EPOXY, GREY
 STUD: COPPER C11000 - TIN PLATED
 CLAMP: 14 GA. 304 STAINLESS STEEL

- SPECIFICATIONS:
1. MANUFACTURED IN ACCORDANCE WITH IEEE Std 386-2016
 2. STANDARD VOLTAGE CLASS 38kV
 3. MAX PHASE-TO-GROUND VOLTAGE RATING 22kV
 4. POWER FREQUENCY WITHSTAND 70kV (1 MIN.)
 5. BASIC IMPULSE LEVEL 200kV
 6. MIN PARTIAL DISCHARGE (3pC SENSITIVITY) 26kV
 7. CONTINUOUS CURRENT RATING 900A
 8. TEMPERATURE RANGE: E04 -40 °C TO 120 °C
 E07 -40 °C TO 105 °C



H-J INTERNATIONAL, INC.
 3010 HIGH RIDGE BLVD, HIGH RIDGE, MO. 63049 USA
 PHONE 1-636-677-3421 FAX 1-636-376-1915

BUSHING, DEAD BREAK, 900A

PROPRIETARY AND CONFIDENTIAL
 THE INFORMATION CONTAINED IN THIS DRAWING IS THE SOLE PROPERTY OF H-J INTERNATIONAL, INC. ANY REPRODUCTION IN PART OR AS A WHOLE WITHOUT THE WRITTEN PERMISSION OF H-J INTERNATIONAL, INC. IS STRICTLY PROHIBITED.

TOLERANCES (EXCEPT AS NOTED)
 DECIMALS: ±.032/.8mm
 ANGLES: ± 2°

APPROVED BY	...	DATE	--/--/----
CHECKED BY	CJT	DATE	9/29/16
DRAWN BY	TJF	DATE	9/29/2016
TOOL NO.			
PRODUCT GRP.			

MATERIAL (SEE DRAWING)	QTY.
DRAWING NO.	12-004-200
SCALE 1:2	SIZE B
REV. 6	SHEET 1 OF 1