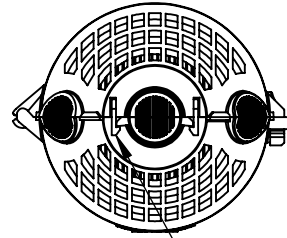


PROPRIETARY INFORMATION

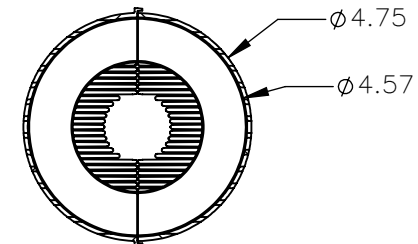
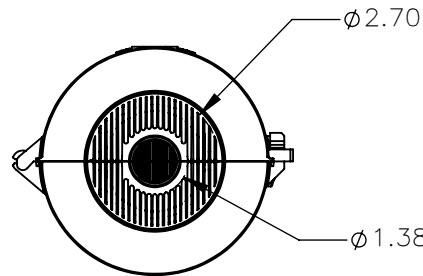
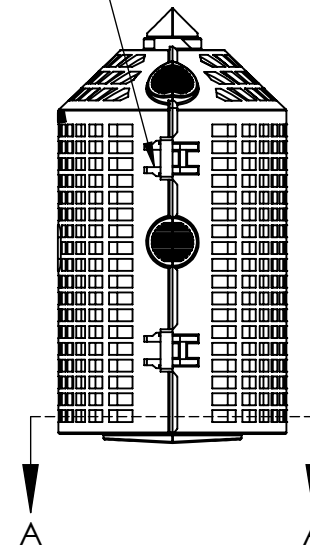
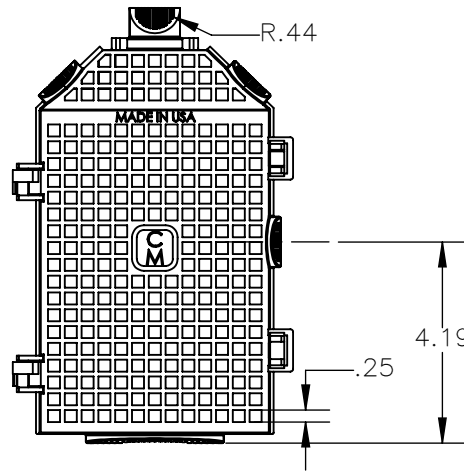
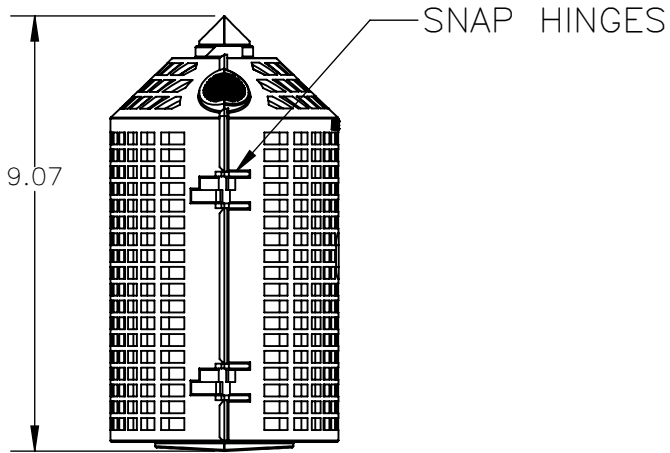
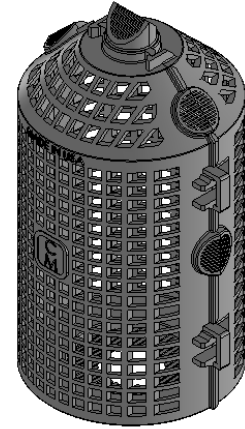
THE INFORMATION CONTAINED ON THIS DRAWING IS CONSIDERED PROPRIETARY AND MAY NOT, IN WHOLE OR IN PART, BE REPRODUCED OR USED FOR THE MANUFACTURE OF THE PART DISCLOSED HERE-IN WITHOUT THE WRITTEN PERMISSION OF CENTRAL MOLONEY, INC.

NO.

70380486



RELEASABLE LATCHES



SECTION A-A

NOTE: THIS IS A PURCHASED PART B.O.M. IS FOR REFERENCE ONLY.

NOTE: ALL DIMENSIONS ARE IN INCHES

| | | | | |
|----------|------------------------------|--------------|------|-----|
| 2 | MESHED SHED MOUNT GUARD - RH | 70380485 | 1 | EA. |
| 1 | SHED MOUNT GUARD - LH | 70380484 | 1 | |
| ITEM NO. | DESCRIPTION | RM-PP-CC NO. | QTY. | U/M |

| | | | | |
|--------------------------------------|------------|--|--|-----------------|
| DRWN BY B.M. | SCALE: 1:4 | | Central Moloney, Inc. Components Operation | |
| DATE 9/3/15 | | | | |
| TOLERANCE UNLESS OTHERWISE SPECIFIED | | 5500 Jefferson Parkway-Phone (870) 247-5320-Pine Bluff, Arkansas 71602 | | |
| .X=±.100 | .XX=±.050 | .XXX=±.010 | TITLE MESHED SHED MOUNT GUARD ASSY. | NO. 70380486 |
| | | | REV. | |