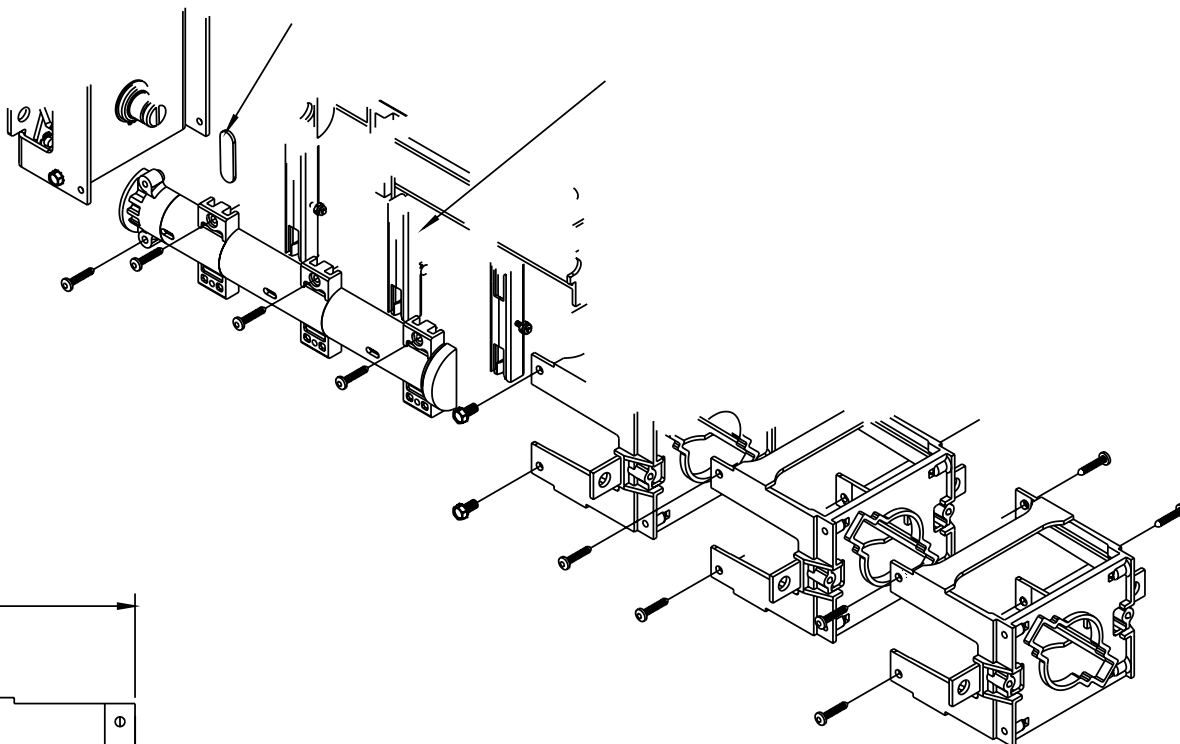
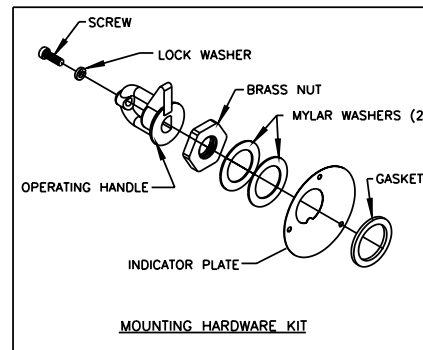
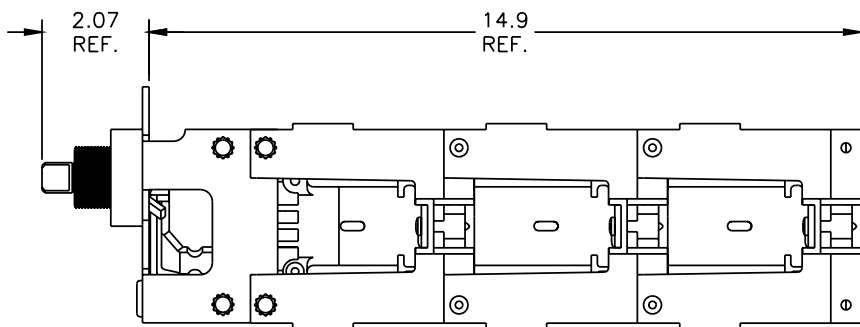


PROPRIETARY INFORMATION
 THE INFORMATION CONTAINED ON THIS DRAWING IS CONSIDERED PROPRIETARY AND MAY NOT, IN WHOLE OR IN PART, BE REPRODUCED OR USED FOR THE MANUFACTURE OF THE PART DISCLOSED HERE-IN WITHOUT THE WRITTEN PERMISSION OF CENTRAL MOLONEY, INC.



NOTE

1. TORQUE ITEM NO. 6 TO 30-40 IN./LBS.
2. TORQUE ITEM NO. 7 TO 30-40 IN./LBS.
3. TORQUE ITEM NO. 8 TO 75-85 IN./LBS.



9	MOUNTING HARDWARE KIT (SEE DETAIL)	70340168	1	EA.
8	.25-20 x .50" SELF TAPPING SCREW	20019500	4	EA.
7	#10-14 x .75 PAN HEAD SCREW	20013911	8	EA.
6	#10-14 x 1.00 PAN HEAD SCREW	20013910	8	EA.
5	SWITCH BASE ASSEMBLY	70340157	3	EA.
4	CONTACT ASSEMBLY	70340158	3	EA.
3	ROTOR (TRIPLE)	70340102	2	EA.
2	TORQUE TRANSFER BAR	70340120	1	EA.
1	TOGGLE MECHANISM	70340163	1	EA.

ITEM	DESCRIPTION	RM-PP-CC NO.	QTY.	U/M
------	-------------	--------------	------	-----

NO.	REVISION	ECN NO.	DATE
-----	----------	---------	------

NOTE: ALL DIMENSIONS ARE IN INCHES.

DRWN BY: *B.M.* SCALE: N.T.S.
 DATE: 1/23/98



Central Moloney, Inc.
 Components Operation

5500 Jefferson Parkway-Phone (870) 247-5320-Pine Bluff, Arkansas 71602
 TITLE: LOAD BREAK SWITCH ASSEMBLY
 SINGLE NUT MTG., 3 DECK, WALL MT., W/ MTG. HWD.
 NO. 70343660

.XXX=±.010