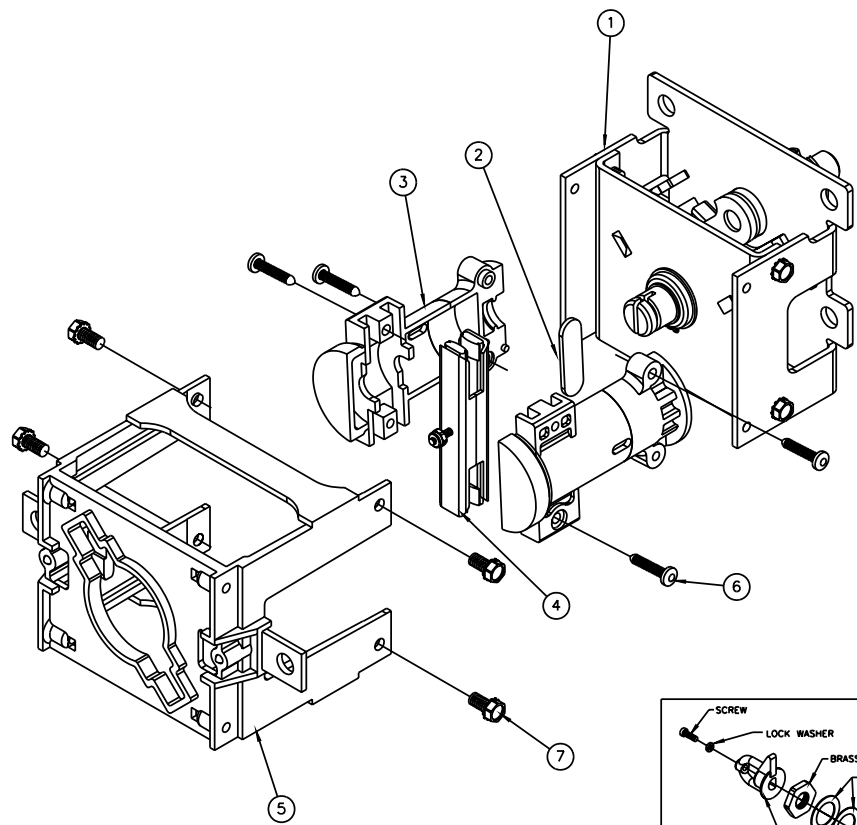
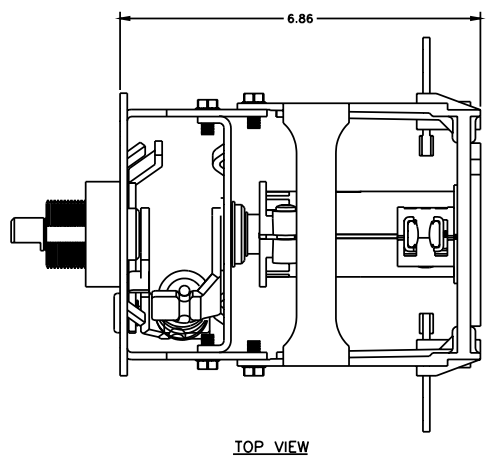


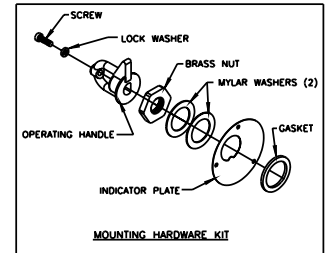
PROPRIETARY INFORMATION
 THE INFORMATION CONTAINED ON THIS DRAWING IS CONSIDERED PROPRIETARY AND MAY NOT, IN WHOLE OR IN PART, BE REPRODUCED OR USED FOR THE MANUFACTURE OF THE PART DISCLOSED HEREIN WITHOUT THE WRITTEN PERMISSION OF CENTRAL MOLONEY, INC.

NO. 70341663



NOTE

- 1. TORQUE ITEM NO. 6 TO 30-40 IN./LB.
- 2. TORQUE ITEM NO. 7 TO 75-85 IN./LB.



8	MOUNTING HARDWARE KIT (SEE DETAIL)	70340169	1	EA.
7	.25-20 x .50 SELF TAPPING SCREW	20019500	4	EA.
6	#10-14 x 1.00 PAN HEAD SCREW	20013910	4	EA.
5	SWITCH BASE ASSEMBLY	70340157	1	EA.
4	CONTACT ASSEMBLY	70340158	1	EA.
3	ROTOR	70340100	2	EA.
2	TORQUE TRANSFER BAR	70340120	1	EA.
1	TOGGLE MECHANISM	70340163	1	EA.
ITEM	DESCRIPTION	RM-PP-CC NO.	QTY	U/M

NOTE: ALL DIMENSIONS ARE IN INCHES

DRAWN BY R.O.	SCALE FULL	Central Moloney, Inc. Components Operation
DATE 7/25/03		
TOLERANCE UNLESS OTHERWISE SPECIFIED .X = ± .100 .XX = ± .050 .XXX = ± .010		5500 Jefferson Parkway-Phone (870) 247-5320-Pine Bluff, Arkansas 71602 TITLE LOADBREAK SWITCH ASSEMBLY SINGLE NUT MTC., 1 DECK, WALL MTD., W/ MTC. HDW.
		NO. 70341663
		REV.