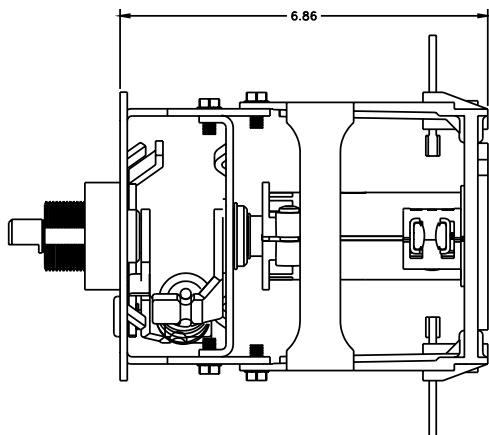


PROPRIETARY INFORMATION
 THE INFORMATION CONTAINED ON THIS DRAWING IS CONSIDERED PROPRIETARY AND MAY NOT, IN WHOLE OR IN PART, BE REPRODUCED OR USED FOR THE MANUFACTURE OF THE PART DISCLOSED HERE-IN WITHOUT THE WRITTEN PERMISSION OF CENTRAL MOLONEY, INC.

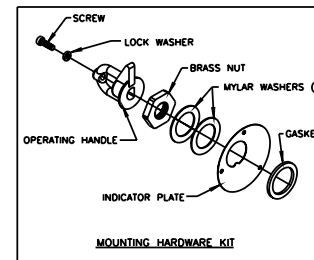
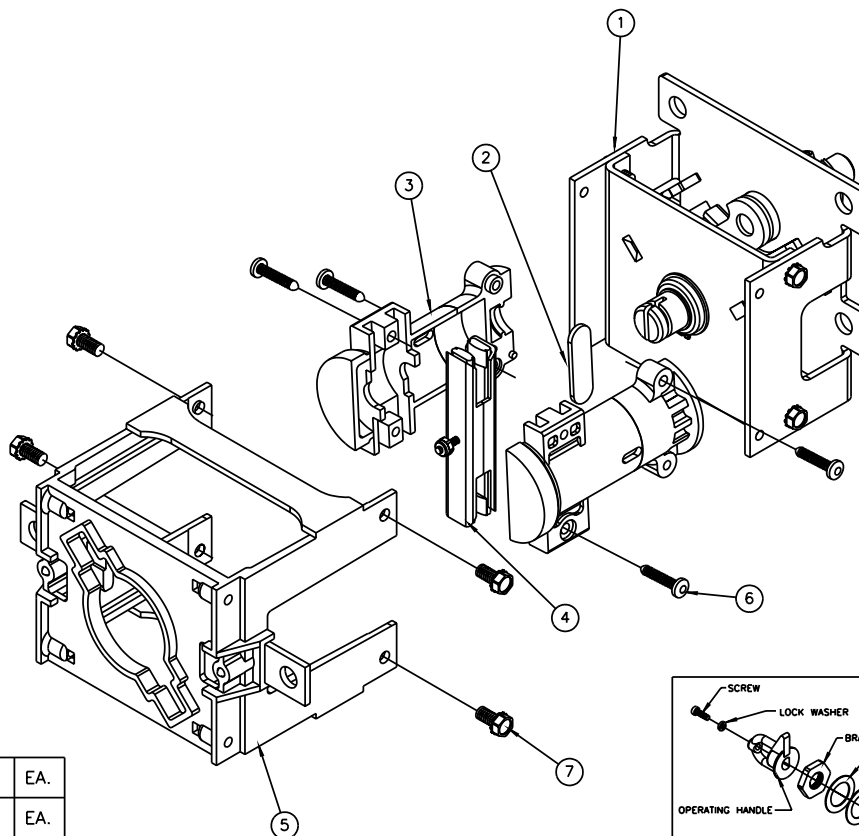
NO. 703416-60



TOP VIEW

NOTE

- 1. TORQUE ITEM NO. 6 TO 30-40 IN./LB.
- 2. TORQUE ITEM NO. 7 TO 75-85 IN./LB.



-60	8	MOUNTING HARDWARE KIT (SEE DETAIL)	703401-68	1	EA.
	7	.25-20 x .50 SELF TAPPING SCREW	200195-00	4	EA.
	6	#10-14 x 1.00 PAN HEAD SCREW	200139-10	4	EA.
	5	SWITCH BASE ASSEMBLY	703401-57	1	EA.
	4	CONTACT ASSEMBLY	703401-58	1	EA.
	3	ROTOR	703401-00	2	EA.
	2	TORQUE TRANSFER BAR	703401-20	1	EA.
	1	TOGGLE MECHANISM	703401-63	1	EA.
P/N	ITEM	DESCRIPTION	RM-PP-CC NO.	QTY	U/M

NOTE: ALL DIMENSIONS ARE IN INCHES

3	NOTE NO. 2 WAS 75-85 IN./LBS.	1422	4/19/01	DATE	4/29/97	TOLERANCE UNLESS OTHERWISE SPECIFIED .X = ±.100 .XX = ±.050 .XXX = ±.010	TITLE LOADBREAK SWITCH ASSEMBLY SINGLE NUT MTD., 1 DECK, WALL MTD., W/ MTG. HDW.	NO. 703416-60 REV. 3
2	ADDED MYLAR WASHERS TO HARDWARE KIT DETAIL.	1266	6/1/00	DATE	4/29/97			
1	NOTE NO.1 WAS 50-60 IN./LB.	1045	10/15/97	DATE	4/29/97	5500 Jefferson Parkway--Phone (870) 247-5320--Pine Bluff, Arkansas 71602 Central Moloney, Inc. Components Operation		