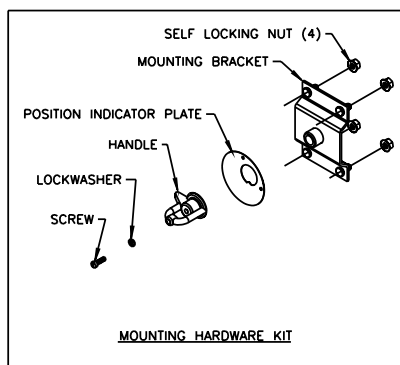
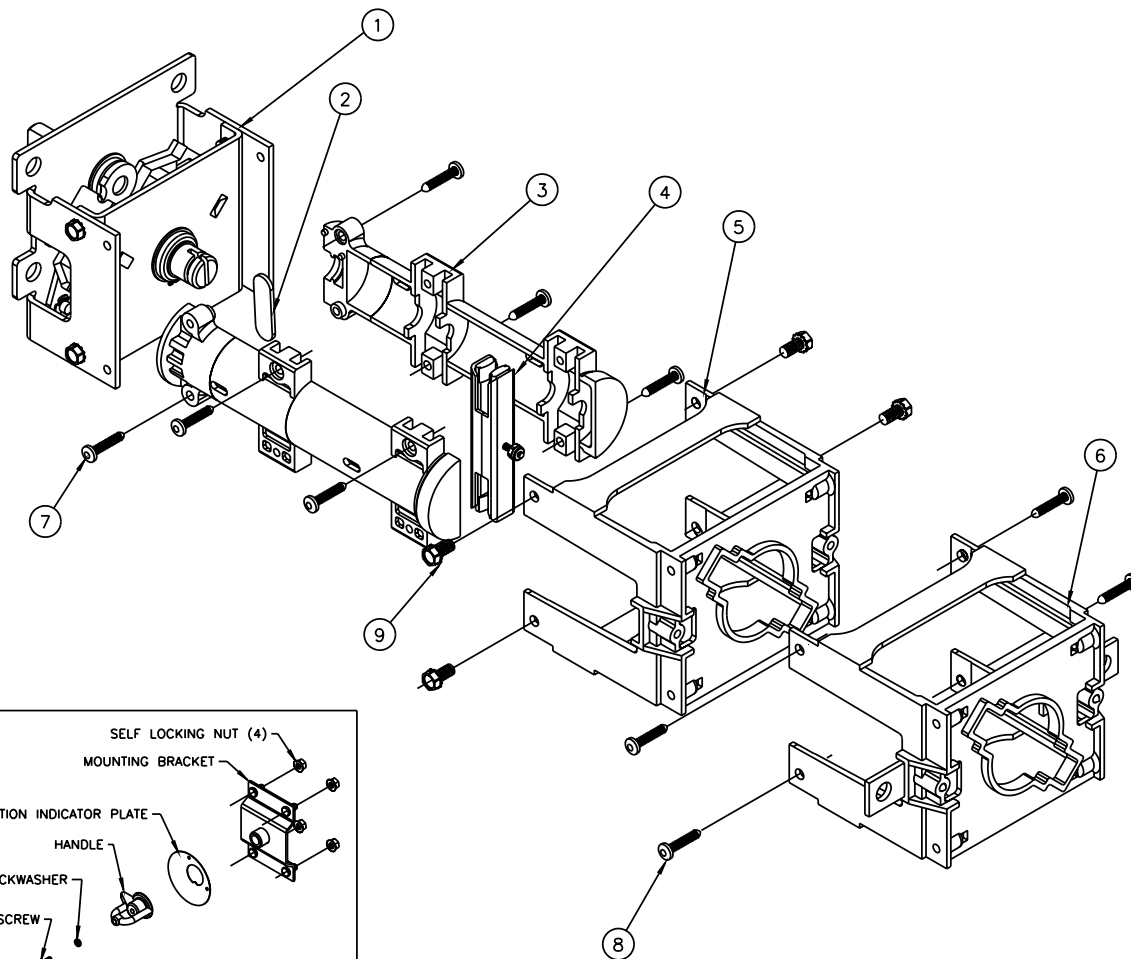
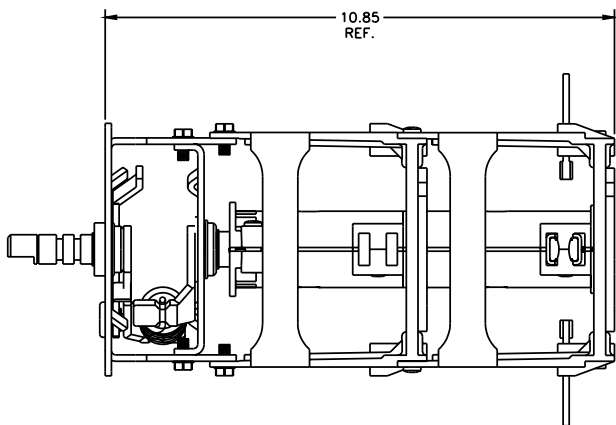


PROPRIETARY INFORMATION
 THE INFORMATION CONTAINED ON THIS DRAWING IS CONSIDERED PROPRIETARY AND MAY NOT, IN WHOLE OR IN PART, BE REPRODUCED OR USED FOR THE MANUFACTURE OF THE PART DISCLOSED HERE-IN WITHOUT THE WRITTEN PERMISSION OF CENTRAL MOLONEY, INC.

NO. 70341162

NOTE

1. TORQUE ITEM NO. 7 TO 30-40 INCH POUNDS.
2. TORQUE ITEM NO. 8 TO 30-40 INCH POUNDS.
3. TORQUE ITEM NO. 9 TO 75-85 INCH POUNDS.



10	MOUNTING HARDWARE KIT (NOT SHOWN)	70340174	1	EA.
9	.25-20 x .50 SELF TAPPING SCREW	20019500	4	EA.
8	#10-14 x .75 PAN HEAD SCREW	20013911	4	EA.
7	#10-14 x 1.0 PAN HD. SCREW	20013910	6	EA.
6	SWITCH BASE ASSEMBLY	70340157	1	EA.
5	SWITCH BASE (BLANK)	70340103	1	EA.
4	ROTOR CONTACT ASSEMBLY	70340158	1	EA.
3	ROTOR (DOUBLE)	70340101	2	EA.
2	TORQUE TRANSFER BAR	70340120	1	EA.
1	TOGGLE MECHANISM ASSEMBLY	70340162	1	EA.
ITEM	DESCRIPTION	RM-PP-CC NO.	QTY	U/M

NOTE: ALL DIMENSIONS ARE IN INCHES

DRWN BY	SCALE
R.O.	FULL
DATE	7/25/03
TOLERANCE UNLESS OTHERWISE SPECIFIED	
.X = ±.100	.XX = ±.050
.XXX = ±.010	



Central Moloney, Inc.
 Components Operation

5500 Jefferson Parkway-Phone (870) 247-5320-Pine Bluff, Arkansas 71602

TITLE	LOADBREAK SWITCH ASSEMBLY	NO.	70341162	REV.
WELD TYPE, 1 DECK, COVER MTD., W/MTG. HDW.				