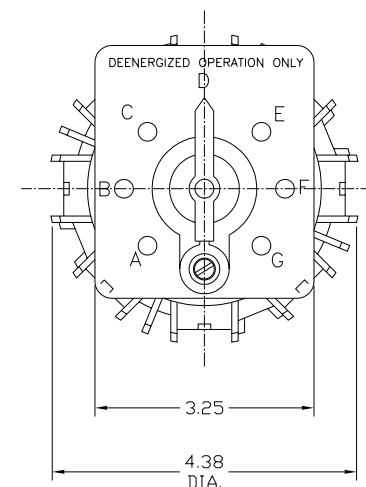
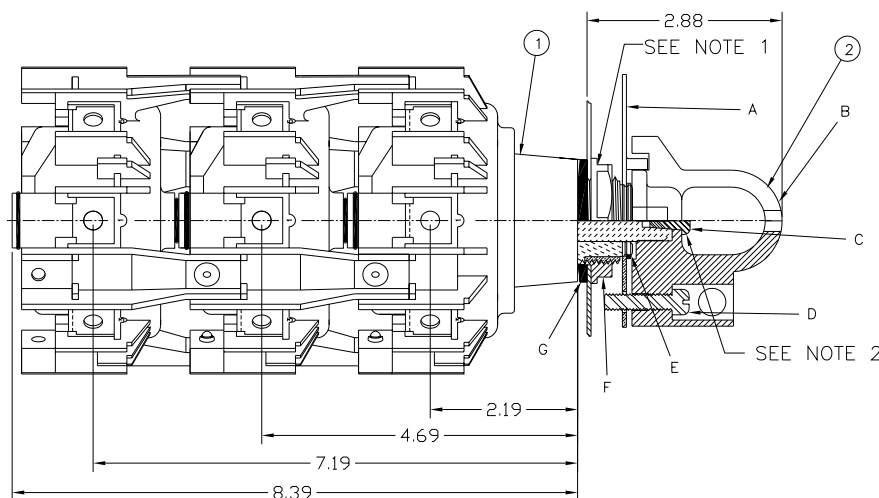
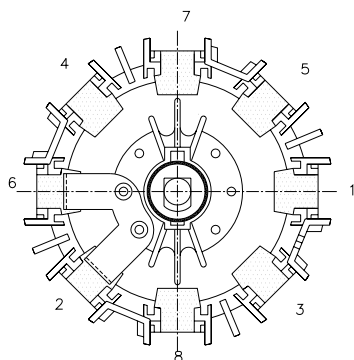


PROPRIETARY INFORMATION
 THE INFORMATION CONTAINED ON THIS DRAWING IS CONSIDERED PROPRIETARY AND MAY NOT, IN WHOLE OR IN PART, BE REPRODUCED OR USED FOR THE MANUFACTURE OF THE PART DISCLOSED HERE-IN WITHOUT THE WRITTEN PERMISSION OF CENTRAL MOLONEY, INC.

NO. 70334355

TERMINAL LOCATION AT "D" HANDLE POSITION



NOTES:

1. T.C. MOUNTING NUT INSTALLATION TORQUE IS 8-9 FOOT POUNDS.
2. HANDLE MOUNTING SCREW TORQUE IS 20-25 INCH POUNDS.

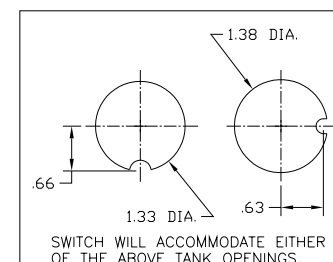
PACKAGING NOTE:

-BULK PACKED-

MOUNTING HARDWARE IS BULK PACKED SEPARATELY IN A PLASTIC BAG, IN THE SAME QUANTITY AS SWITCHES BEING SHIPPED IN THE CONTAINER.

MOUNTING HARDWARE INCLUDES			
ITEM	DESCRIPTION	QTY.	U/M
A	INDICATOR PLATE	1	EA.
B	OPERATING KNOB	1	EA.
C	SCREW SELF TAPPING S.S.	1	EA.
D	.250-20 X 1" BRASS SCREW	1	EA.
E	SNAP RING (IND. PL. RETAINER)	1	EA.
F	NUT	1	EA.
G	GASKET (BUNA'N')	1	EA.
ITEM	DESCRIPTION	QTY.	U/M

ELECTRICAL RATINGS			
IMPULSE (KV BIL)	AC HI-POT (KV)	CONTINUOUS CURRENT (AMPS)	FAULT CURRENT (AMPS)
150	(1 MINUTE) 50	150 (SERIES CONNECTED)	3750 FOR 2 SECONDS



NOTE: ALL DIMENSIONS ARE IN INCHES

2	MOUNTING HARDWARE	70330021	1	EA.
1	TAP CHANGER ASSY.	70334351	1	EA.
ITEM	DESCRIPTION	RM-PP-CC NO.	QTY	U/M

NO.	REVISION	ECN NO.	DATE

DRWN BY R.O.	SCALE FULL	Central Moloney, Inc. Components Operation	5500 Jefferson Parkway-Phone (870) 247-5320-Pine Bluff, Arkansas 71602	
DATE 8/17/05	TOLERANCE UNLESS OTHERWISE SPECIFIED .X=±.100 .XX=±.050 .XXX=±.010		TITLE TAP CHANGER 7 POSITION 150 AMPERES 150KV B.I.L. W/HOOK HANDLE MTG. HDW.	NO. 70334355