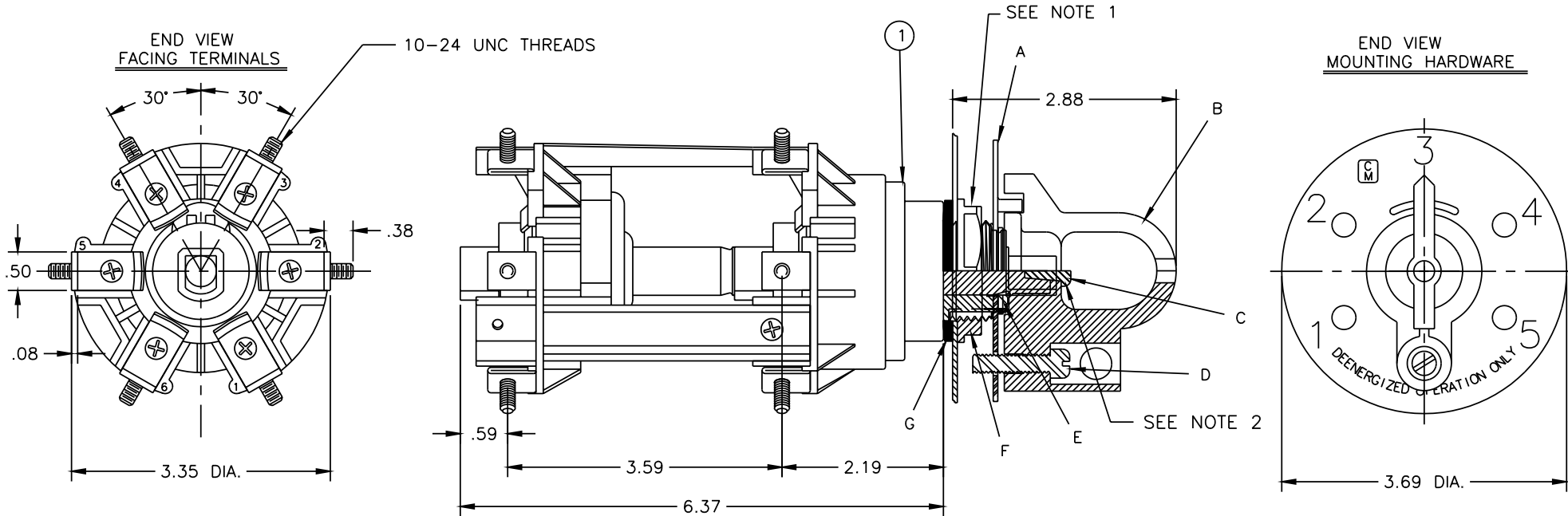


PROPRIETARY INFORMATION
 THE INFORMATION CONTAINED ON THIS DRAWING IS CONSIDERED PROPRIETARY AND MAY NOT, IN WHOLE OR IN PART, BE REPRODUCED OR USED FOR THE MANUFACTURE OF THE PART DISCLOSED HERE-IN WITHOUT THE WRITTEN PERMISSION OF CENTRAL MOLONEY, INC.

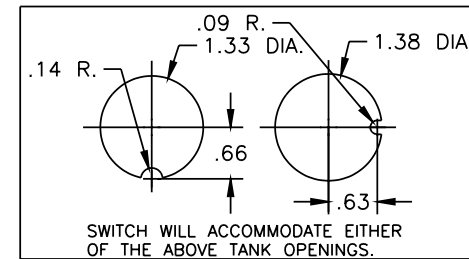


PACKAGING NOTE:

-BULK PACKED-

MOUNTING HARDWARE IS BULK PACKED SEPARATELY IN A PLASTIC BAG, IN THE SAME QUANTITY AS SWITCHES BEING SHIPPED IN THE CONTAINER.

- NOTES: 1. TAP CHANGER MOUNTING NUT INSTALLATION TORQUE IS 8-9 FT./LBS.
 2. HOOK STICK MOUNTING SCREW INSTALLATION TORQUE IS 20-25 IN./LBS.



MOUNTING HARDWARE INCLUDES			
ITEM	DESCRIPTION	QTY.	U/M
A	INDICATOR PLATE	1	EA.
B	OPERATING KNOB	1	EA.
C	SCREW SELF TAPPING S.S.	1	EA.
D	.250-20 X 1" BRASS SCREW	1	EA.
E	SNAP RING (IND. PL. RETAINER)	1	EA.
F	NUT	1	EA.
G	GASKET (BUNA'N')	1	EA.

ELECTRICAL RATINGS			
IMPULSE (KV BIL)	AC HI-POT (KV)	CONTINUOUS CURRENT (AMPS)	FAULT CURRENT (AMPS)
150	50	100	2500 FOR 2 SECONDS

NOTE: ALL DIMENSIONS ARE IN INCHES.

ITEM	DESCRIPTION	RM-PP-CC NO.	QTY.	U/M
2	MOUNTING HARDWARE	703301-57	1	EA
1	TAP CHANGER ASSY.	703332-60	1	EA

NO.	REVISION	ECN NO.	DATE	DRWN BY	SCALE
4	REVISED DRAWING B.O.M. TO LIST MOUNTING HARDWARE AS ONE NUMBER INSTEAD OF INDIVIDUAL PARTS.	1351	11/7/00	R.O.	FULL
3	ADDED PACKAGING NOTE TO DRAWING.	1170	1/19/99		
2	NOTE NO. 1 TORQUE WAS 8.5 FT./LBS ELEC. RATING TABLE WAS ADDED	1074	2/17/98		
1	ITEM NO. 2 WAS 703242-22	1068	1/16/98		

DATE: 10/30/97

TOLERANCE UNLESS OTHERWISE SPECIFIED
 X± .100 .XXX± .010

Central Moloney, Inc.
 Components Operation
 5500 Jefferson Parkway-Phone (870) 247-5320-Pine Bluff, Arkansas 71602

TITLE: TAP CHANGER ASSEMBLY W/HOOK HANDLE MTG. HDW.

NO. 703332-67

REV. 4