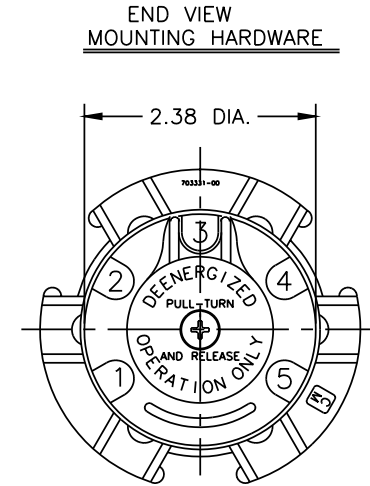
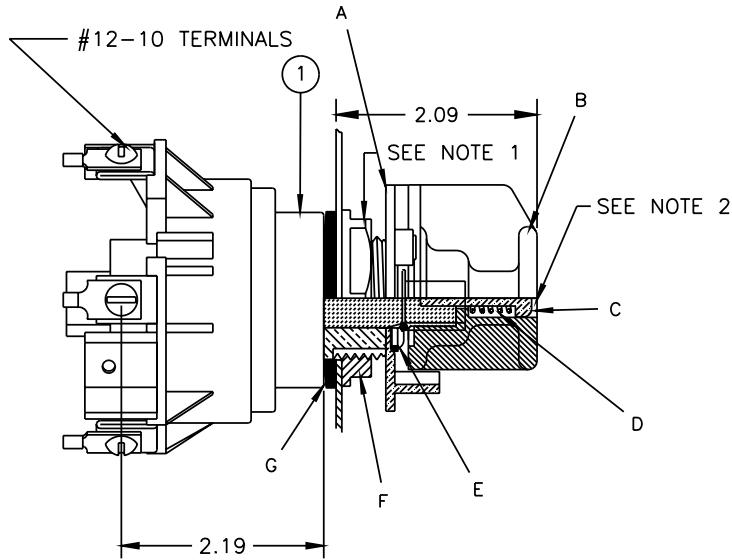
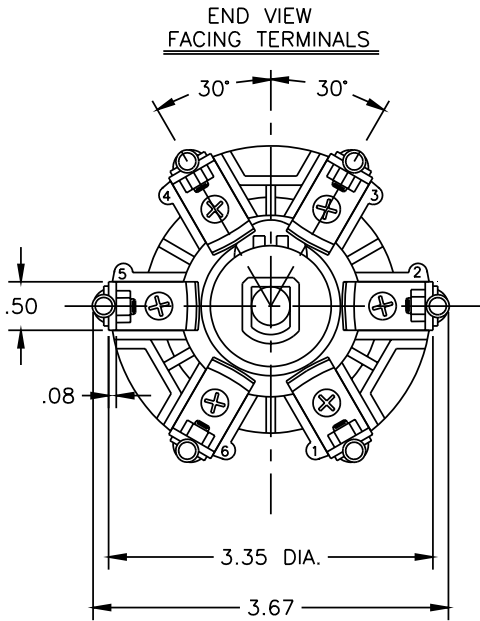


PROPRIETARY INFORMATION
 THE INFORMATION CONTAINED ON THIS DRAWING IS CONSIDERED PROPRIETARY AND MAY NOT, IN WHOLE OR IN PART, BE REPRODUCED OR USED FOR THE MANUFACTURE OF THE PART DISCLOSED HERE-IN WITHOUT THE WRITTEN PERMISSION OF CENTRAL MOLONEY, INC.



NOTES:

1. TAP CHANGER MOUNTING NUT INSTALLATION TORQUE IS 8-9 FT./LBS.
2. PULL HANDLE MOUNTING SCREW INSTALLATION TORQUE IS 20-25 IN./LBS.

PACKAGING NOTE:

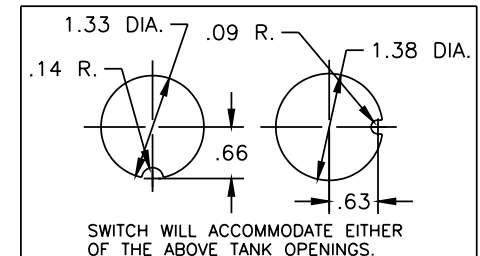
-BULK PACKED-

MOUNTING HARDWARE IS BULK PACKED SEPARATELY IN A PLASTIC BAG, IN THE SAME QUANTITY AS SWITCHES BEING SHIPPED IN THE CONTAINER.

| MOUNTING HARDWARE INCLUDES | | | |
|----------------------------|-------------------------------|------|-----|
| ITEM | DESCRIPTION | QTY. | U/M |
| A | INDICATOR PLATE | 1 | EA. |
| B | OPERATING KNOB | 1 | EA. |
| C | SCREW SELF TAPPING S.S. | 1 | EA. |
| D | SPRING S.S. | 1 | EA. |
| E | SNAP RING (IND. PL. RETAINER) | 1 | EA. |
| F | NUT | 1 | EA. |
| G | GASKET (BUNA'N') | 1 | EA. |

| ELECTRICAL RATINGS | | | |
|--------------------|----------------|-----------------------------|----------------------|
| IMPULSE (KV BIL) | AC HI-POT (KV) | CONTINUOUS CURRENT * (AMPS) | FAULT CURRENT (AMPS) |
| 150 | 50 | 100 | 2500 FOR 2 SECONDS |

*NOTE-CURRENT RATING EXCLUDES PRE-INSTALLED CRIMP TERMINALS.



NOTE: ALL DIMENSIONS ARE IN INCHES.

CC: 9689

| 2 | MOUNTING HARDWARE | 703301-53 | 1 | EA. |
|------|-------------------|--------------|------|-----|
| 1 | TAP CHANGER ASSY. | 703331-53 | 1 | EA. |
| ITEM | DESCRIPTION | RM-PP-CC-NO. | QTY. | U/M |

| 3 | ADDED #12-10 TERMINAL NOTE TO DRAWING. | 1420 | 4/11/01 |
|-----|--|---------|---------|
| 2 | CRIMP TERMINAL NOTE WAS ADDED. REVISED DRAWING B.O.M. TO LIST MOUNTING HARDWARE AS ONE NUMBER INSTEAD OF INDIVIDUAL PARTS. | 1351 | 11/2/00 |
| 1 | ADDED PACKAGING NOTE TO DRAWING. | 1170 | 1/19/99 |
| NO. | REVISION | ECH NO. | DATE |

| DRWN BY | SCALE |
|--------------------------------------|-------|
| R.O. | FULL |
| DATE | |
| 4/8/98 | |
| TOLERANCE UNLESS OTHERWISE SPECIFIED | |
| .X=±.100 | |
| .XX=±.050 .XXX=±.010 | |

C Central Moloney, Inc.
M Components Operation

5500 Jefferson Parkway-Phone (870) 247-5320-Pine Bluff, Arkansas 71602

| TITLE | NO. | REV. |
|---|-----------|------|
| TAP CHANGER- #12-10 BOLTED TERMINALS W/ PULL HANDLE | 703331-59 | 3 |