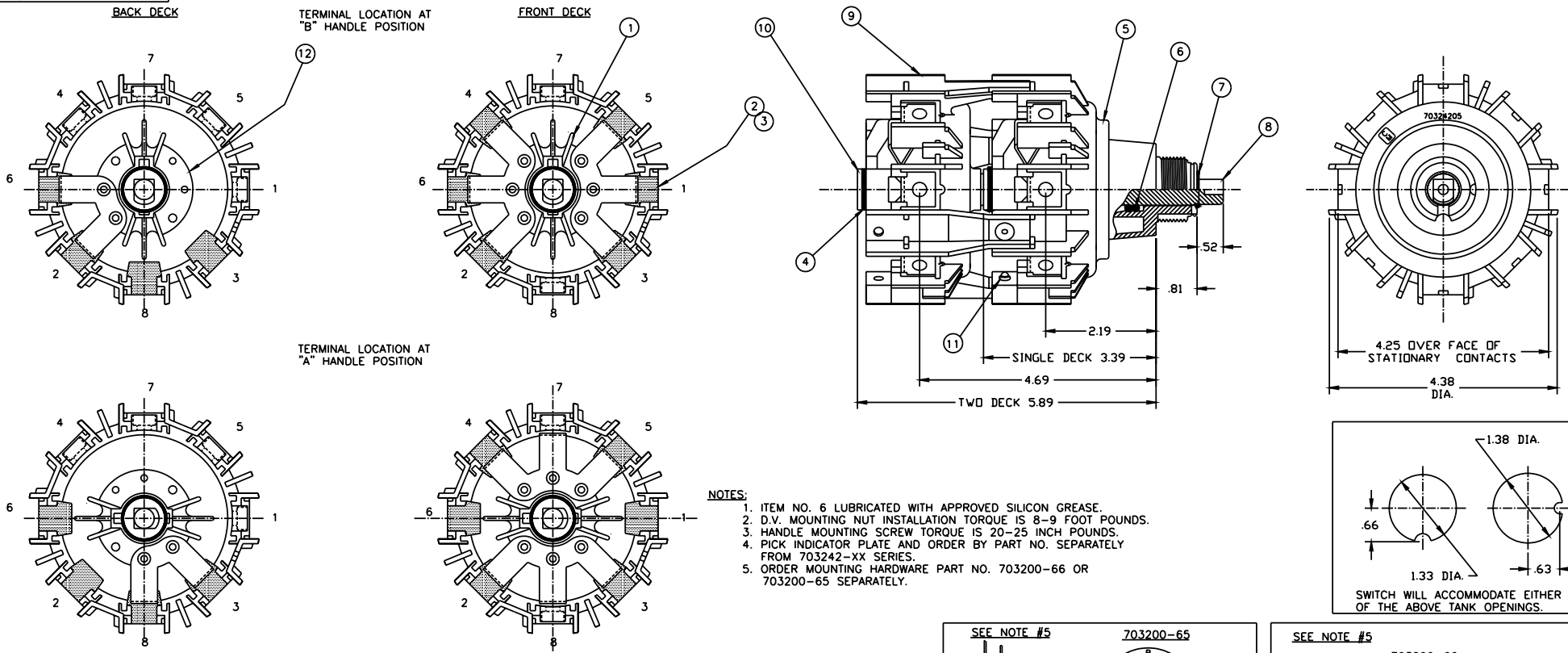
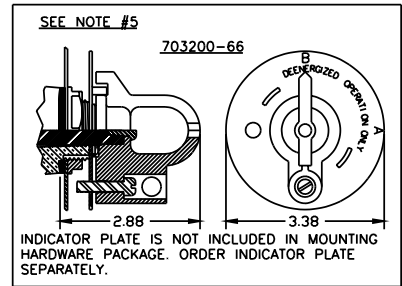
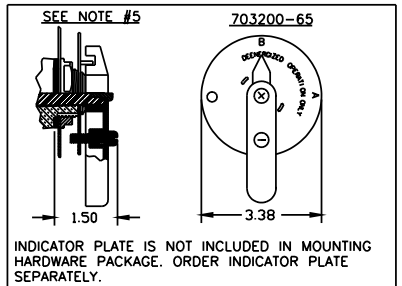
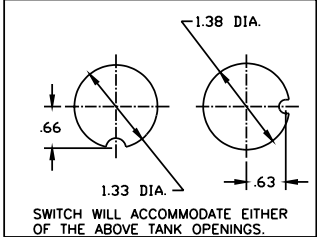


PROPRIETARY INFORMATION
 THE INFORMATION CONTAINED ON THIS DRAWING IS CONSIDERED PROPRIETARY AND MAY NOT, IN WHOLE OR IN PART, BE REPRODUCED OR USED FOR THE MANUFACTURE OF THE PART DISCLOSED HERE-IN WITHOUT THE WRITTEN PERMISSION OF CENTRAL MOLONEY, INC.



- NOTES:**
- ITEM NO. 6 LUBRICATED WITH APPROVED SILICON GREASE.
 - D.V. MOUNTING NUT INSTALLATION TORQUE IS 8-9 FOOT POUNDS.
 - HANDLE MOUNTING SCREW TORQUE IS 20-25 INCH POUNDS.
 - PICK INDICATOR PLATE AND ORDER BY PART NO. SEPARATELY FROM 703242-XX SERIES.
 - ORDER MOUNTING HARDWARE PART NO. 703200-66 OR 703200-65 SEPARATELY.



ELECTRICAL RATINGS			
IMPULSE (KV BIL)	AC HI-POT (KV)	CONTINUOUS CURRENT (AMPS)	FAULT CURRENT SERIES CONNECTED (AMPS)
150	(1 MINUTE) 50	150 SERIES CONNECTED 300 PARALLEL CONNECTED	3750 FOR 2 SECONDS 7500 FOR 0.5 SECONDS

1	2	3	4	5	6	7	8	9	10	11	12
ROTOR ASSEMBLY WITH "W" CONTACTS 703242-67	STATIONARY CONTACT 703242-00	.250"-20 STEEL NUT 200000-01	O-RING ROTOR ASSY. RETAINER 200035-42	SWITCH BODY W/GLAND 703242-05	"O" RING VITON 200035-36	"O" RING SHAF RETAINER 200035-26	DRIVE SHAFT 703242-07	SWITCH BODY W/O GLAND 703242-06	DRIVEN SHAFT 703242-08	RIVET (ALUMINUM) 700003-66	ROTOR ASSY. WITH "V" CONTACTS 703242-68
1	10	10	2	1	2	2	1	1	1	4	1

NOTE: ALL DIMENSIONS ARE IN INCHES

5	ADDED HATCH TO DEFINE STATIONARY CONTACTS.	1085	3/16/98	DATE	10/10/95	SCALE	FULL	Central Moloney, Inc. Components Operation 5500 Jefferson Parkway-Phone (870) 247-5320-Pine Bluff, Arkansas 71602	TITLE D.V. SWITCH ASSEMBLY	NO. 703243-75	REV. 5
4	ITEM NO. 11 WAS BRASS RIVET P/N 700003-43. REDRAWN ON CAD.	719	10/10/95	TOLERANCE UNLESS OTHERWISE SPECIFIED		.X = ±.100 .XX = ±.050 .XXX = ±.010					
NO.	REVISION	ECH. NO.	DATE								