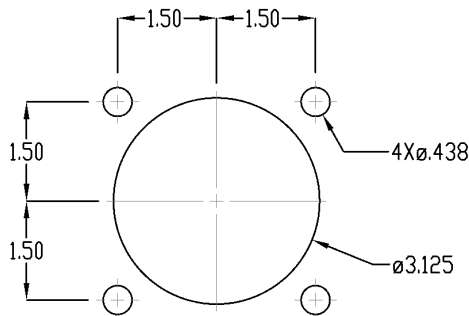


1. Insert bushing in mounting hole (from back side) and torque mounting bolts to 70-80 in-lbs. All bolts should first be hand tightened before applying the final torque. To avoid unnecessary stress on the part, final torque should be applied to the bolts in a diagonal pattern.
2. The hardware must penetrate any painted or non-conductive coating on the grounded mounting plate to ensure ground shield continuity. If the bushing is mounted on an ungrounded or non-conductive plate, a ground strap must be attached to one of the mounting bolts

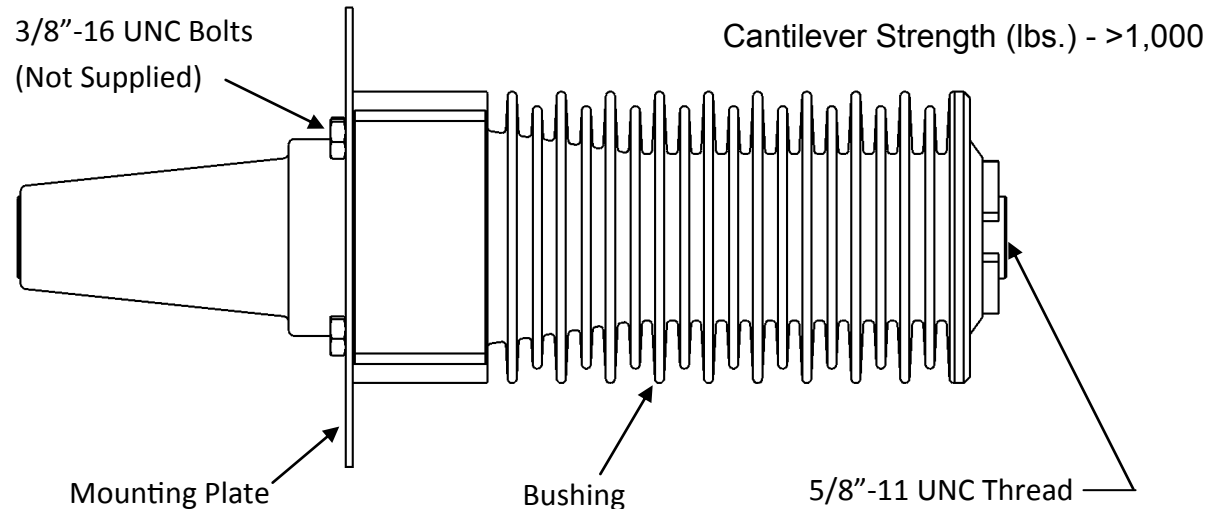
Caution:

DO NOT energize the bushing with only the shipping cap in place. Equipment damage and bushing failure would occur, along with a danger to operating personnel. This bushing should be energized only when it is mated with an appropriate 35 kV Class elbow conforming to IEEE Standard 386. The elbow should be installed per the manufacturer's instructions.

Electrical Ratings				
Max. Voltage Line to Ground (kV RMS)	Impulse (kV BIL)	AC Hi-Pot (kV)	Continuous Current (Amps)	Min. Corona Level (kV)
21.1	150	50	600	26



Mounting Hole



Note: Parts shown are for illustration only.
 Instructions apply to all variations.
 All dimensions given are in inches.