



600A / 900A 15 / 25 kV Class T-Body Deadbreak Connector

Chardon 15/25-TB-600 and 15/25-TB-600T elbows are designed to terminate underground cables to high-voltage apparatus such as transformers and switchgear. They are fully shielded and fully submersible and meet the requirements of IEEE Standard 386. They are interchangeable with other manufacturers products that conform with this industry standard.

The capacitive test point on the insulating plug provides a means of testing the circuit without disturbing the bolted connection. In addition to the capacitive test point feature on the insulating plug, Chardon offers an optional capacitive test point on the T-Body connector. This allows the use of fault indicators, and provides a hotstick operable means of determining circuit condition when used with high impedance voltage sensing devices designed for test points.

T-Body Connectors are designed for use on solid dielectric cable (XLPE or EPR) with extruded semi-conductive shields and concentric neutral, with or without a jacket. Installation on jacketed concentric neutral cable may require additional sealing material. A special grounding adapter is available for tape shield, linear corrugated, unshield, and drain wire cables for use with Deadbreak connectors.

Key Features:

- ◆ 100% factory production testing for partial discharge and AC withstand per IEEE 386.
- ◆ Peroxide cured EPDM rubber provides low tension set and high dielectric strength.
- ◆ Optional selection of test point installed to provide voltage indication.
- ◆ Molded semiconducting shield provides ground shield continuity per the requirements of IEEE 592.
- ◆ Grounding Tab and Stress Relief Cone design provide operational safety.
- ◆ Fully meets IEEE 386 – 2006 specifications.

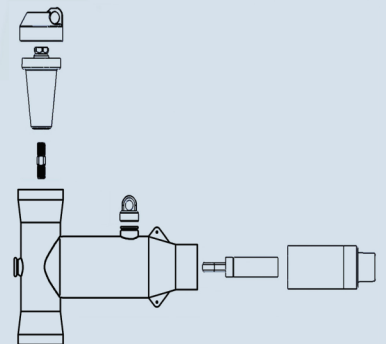
Product Ratings:

- Voltage Class 28kV
- Max Rating Phase-to-Ground 16.2kV
- AC 1 Minute Withstand 45kV
- DC 15 Minute Withstand 88kV
- BIL and Full Wave Crest 140kV
- Minimum Corona Level 19kV (3pC)
- Continuous 600A rms
- 24 Hour Overload 1,000A rms
- Momentary:
25,000A symmetrical 10 cycles
10,000A symmetrical 3.00 sec

Voltage/Current ratings and characteristics are in accordance with IEEE Std 386 standard.

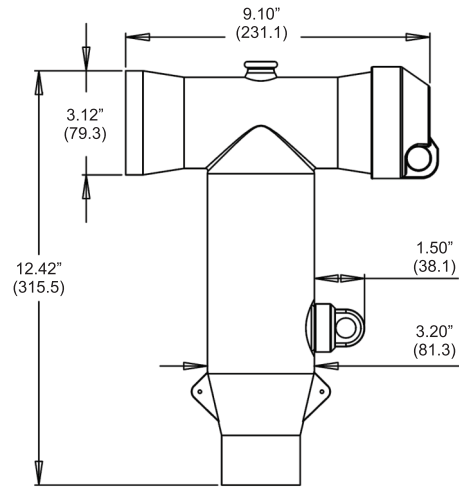
T-Body Kit Content:

- T-Body
- Insulating Plug
(Al for 600A, Cu for 900A)
- Cable Adapter
- Compression Lug
(Al for 600A, Cu for 900A)
- Silicone Lubricant
- Insulating Tape
- Installation Instructions



PRODUCTION TESTS

- Tests conducted in accordance with IEEE Standard 386.
 - Minimum Corona Voltage Level - 19kV (3pC)
 - AC 1 Minute Withstand - 45kV
- Tests conducted in accordance with Chardon Manufacturing Process requirements.
 - Physical Inspection
 - Periodic Dissection
 - Periodic X-ray Analysis



T-BODY CONNECTOR BODY

Molded T-body adapts to all cable sizes and provides a dead front shielded connection.

SEMICONDUCTING INSERT

Precision molded peroxide cured semiconducting insert provides corona-free electrostatic shielding of the compression connector.

INSULATION LAYER

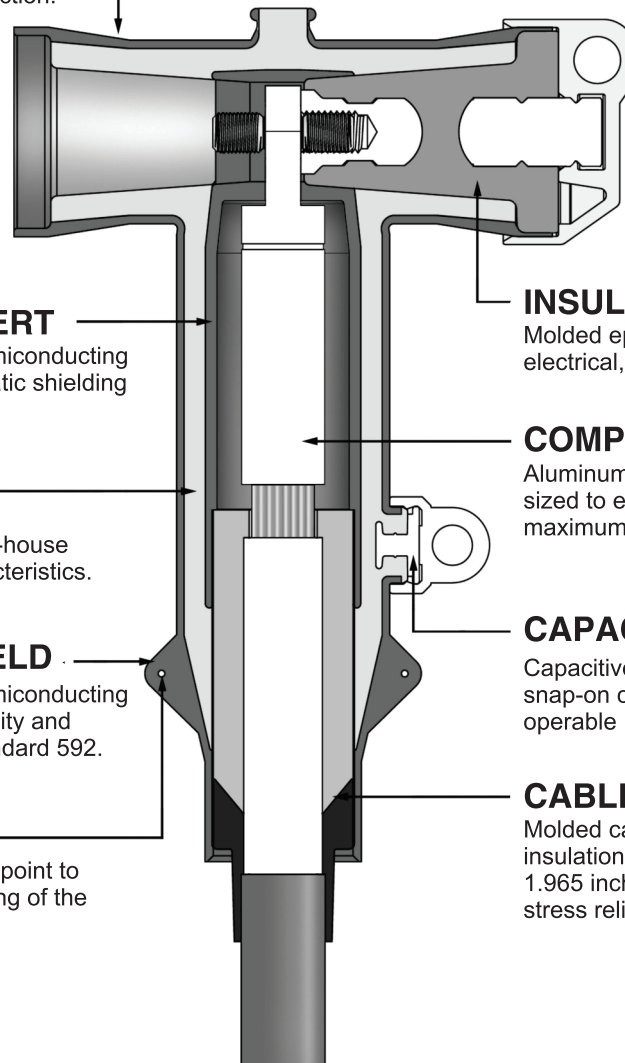
High quality peroxide cured EPDM Insulation is mixed and formulated in-house for complete control of rubber characteristics.

SEMICONDUCTING SHIELD

Precision molded peroxide cured semiconducting shield provides ground shield continuity and meets the requirements of IEEE Standard 592.

DRAIN WIRE TABS

Drain wire tabs provide a convenient point to connect drain wire to ensure grounding of the connector shield.



INSULATING PLUG

Molded epoxy insulating plug provides excellent electrical, thermal and mechanical reliability.

COMPRESSION CONNECTOR

Aluminum/Copper compression connector is sized to ensure a cool running connector with maximum current transfer.

CAPACITIVE TEST POINT

Capacitive test point on molded T-Body with snap-on cap provides a shielded, hotstick operable means to determine circuit condition.

CABLE ADAPTER

Molded cable adapter, sized to fit cable insulation diameters from 0.640 inch to 1.965 inches (16.3 to 49.9 mm), provides stress relief for the terminated cable.

ORDERING INFORMATION

15/25 - TB

STEP 1

STEP 2

STEP 3

STEP 1

Selection of Current Rating and test Point

Code	
600	: 600 AMP WITHOUT Test Point
600T	: 600 AMP WITH Test Point
900	: 900 AMP WITHOUT Test Point
900T	: 900 AMP WITH Test Point

Note: 600A compression lugs are made from aluminum.
600A insulating plugs include an aluminum conductor.
900A compression lugs are made from copper.
900A insulating plugs include a copper conductor.

STEP 2

Selection of Cable Insulation Dimension

Code	Inches	mm
A	0.640 - 0.760	16.3 - 19.3
B	0.720 - 0.845	18.3 - 21.5
C	0.785 - 0.970	19.9 - 24.6
D	0.910 - 1.065	23.1 - 27.1
E	0.980 - 1.140	24.9 - 29.0
F	1.080 - 1.280	27.4 - 32.5
G	1.220 - 1.420	31.0 - 36.1
H	1.360 - 1.560	34.5 - 39.6
J	1.480 - 1.700	37.6 - 43.2
K	1.640 - 1.840	41.7 - 46.7
L	1.780 - 1.965	45.2 - 49.9

STEP 3

Selection of Conductor Size (Al or Cu)

Code	Compressed	Compact	Solid
0002	#2	—	—
0001	#1	—	—
0010	1/0	2/0	1/0
0020	2/0	3/0	2/0
0030	3/0	4/0	3/0
0040	4/0	250	4/0
0250	250	300	—
0300	300	350	—
0350	350	400	—
0400	400	450/500	—
0450	450	500/550	—
0500	500	600	—
0550	550	650	—
0600	600	700	—
0650	650	750/800	—
0750	750	900	—
0800	800	900	—
0900	900	1000	—
1000	1000	—	—

ORDERING EXAMPLE:

An 15/28 kV Elbow, with a test point, and required cable insulation dimension of 1.01 inch, and the compressed cable conductor size type is 550, the part number would be as follows:

15/25 TB

600T

H

0550



The Chardon Group companies:

Chardon Taiwan Corporation

No. 37 Min-Chie Road
Tung Lo Industrial Park
Miao Li, Taiwan 366
Phone: 886-37-984-385
Fax: 886-37-984-770

Shanghai Chardon Electric, Ltd.

No. 9, Lane 55, Fenggong Road
Malu, Jiading
Shanghai, China
Phone: 86-21-3910-5900
Fax: 86-21-3910-5916

Den Mar Utility Products, Inc.

1032 Lido Court
Ft. Lauderdale, FL 33326 USA
Phone: 1-954-384-6217
Fax: 1-866-812-9344