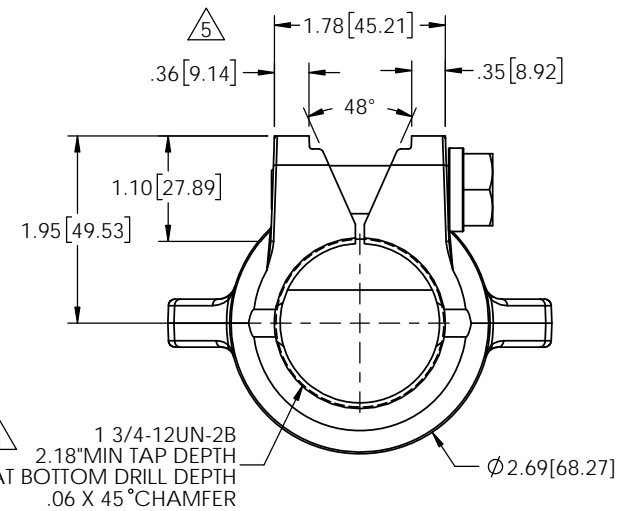
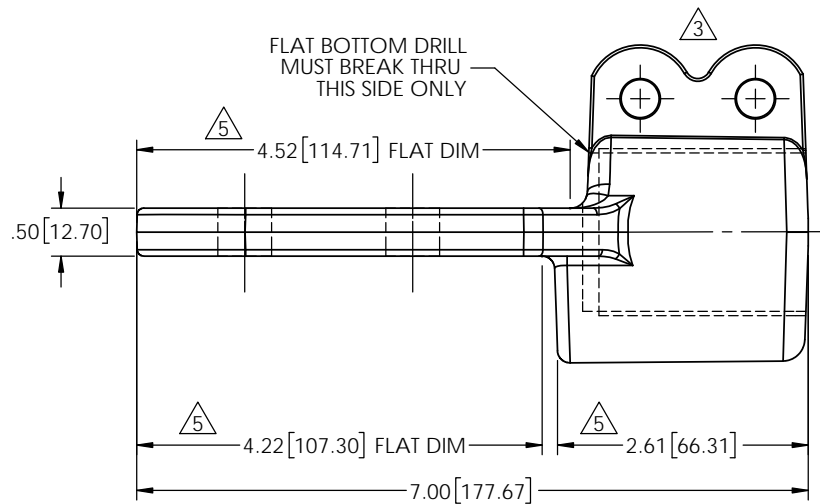
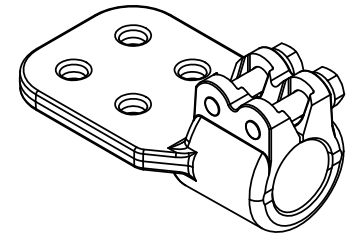
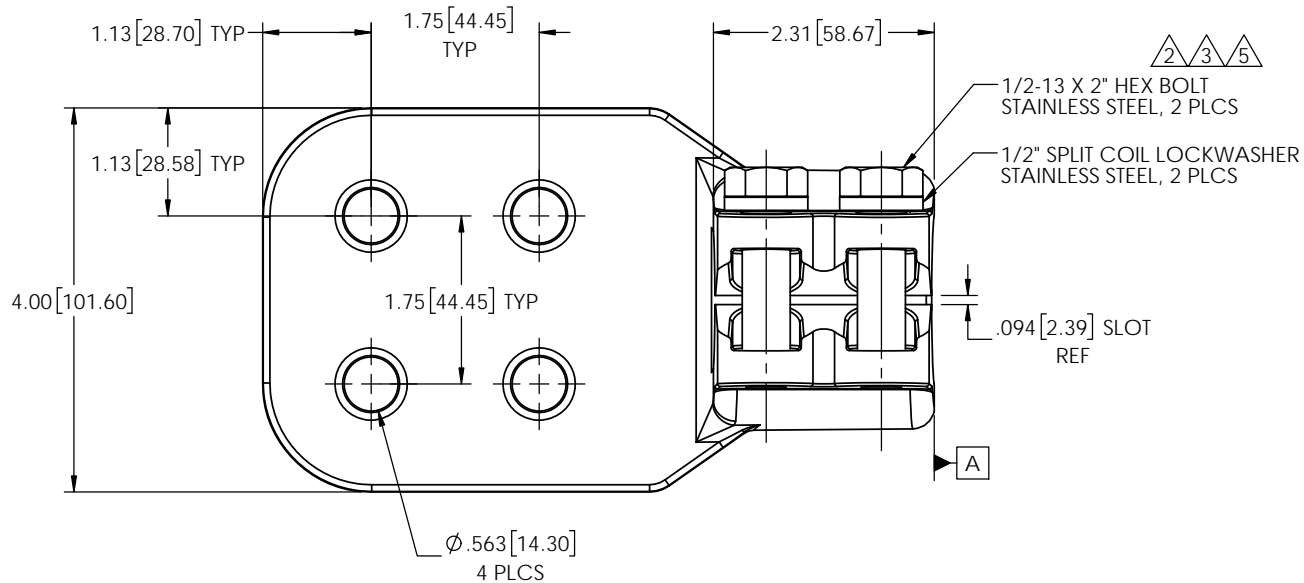


REVISIONS					
REV.	DATE	ECN #	DESCRIPTION	BY	APP'D
1	5/31/05	HJ05-042	CHG'D TAP NOTE	CJT	SP
2	5/05/09	HJ09-097	"STAINLESS STL" ADDED	SMM	JFS
3	9/25/2014	HJ14-137	REM HEX CUTOUT. ADDED 1/2-13UNC TAPS	TJF	BLB
4	4/15/2015	HJ15-058	DRILL DEPTH WAS 2.35" MAX	CLS	BLB
5	5/17/2016	HJ16-084	REM SILCON BRZ. CHG'D BOLT LENGTH, WAS 2.25"-TO-2.0". ADDED CHAMFER. CORRECTED DIMS. SW REDRAW	TJF	CJT



NOTE:
 1. FULL THREAD FROM SURFACE [A] TO THE DEPTH SPECIFIED IN THE TAP NOTE.
 2. ALL DIMENSIONS ARE FOR REFERENCE ONLY.

PROPRIETARY AND CONFIDENTIAL
 THE INFORMATION CONTAINED IN THIS DRAWING IS THE SOLE PROPERTY OF H-J ENTERPRISES, INC. ANY REPRODUCTION IN PART OR AS A WHOLE WITHOUT THE WRITTEN PERMISSION OF H-J ENTERPRISES, INC. IS PROHIBITED.

TOLERANCES (EXCEPT AS NOTED)

DECIMAL
 $\pm .032 / .8\text{mm}$

FRACTIONAL
 \pm

ANGULAR
 $\pm 2^\circ$



DRAWN BY CJT

DATE 6/11/99

SCALE N.T.S.

H-J ENTERPRISES, INC.
 3010 HIGH RIDGE BLVD. HIGH RIDGE, MO. 63049 USA
 PHONE 1-636-677-3421 FAX 1-636-376-1915

A/LUG STUD TO SPADE, 1 3/4-12

MATERIAL C84400 - TIN PLATED

CHK'D - APP'D -

DRAWING NO. **BHDSF60-005TP**

5