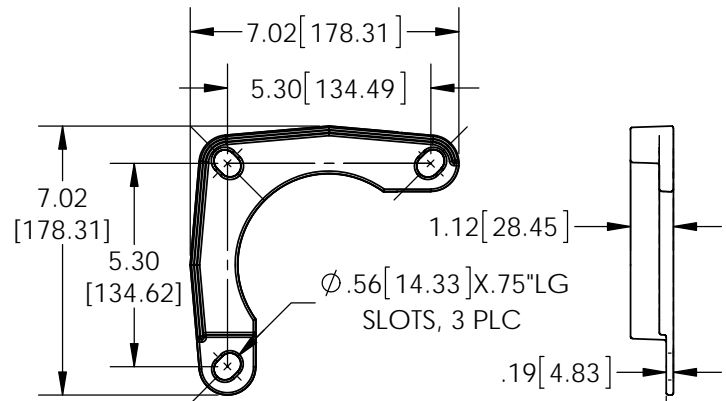
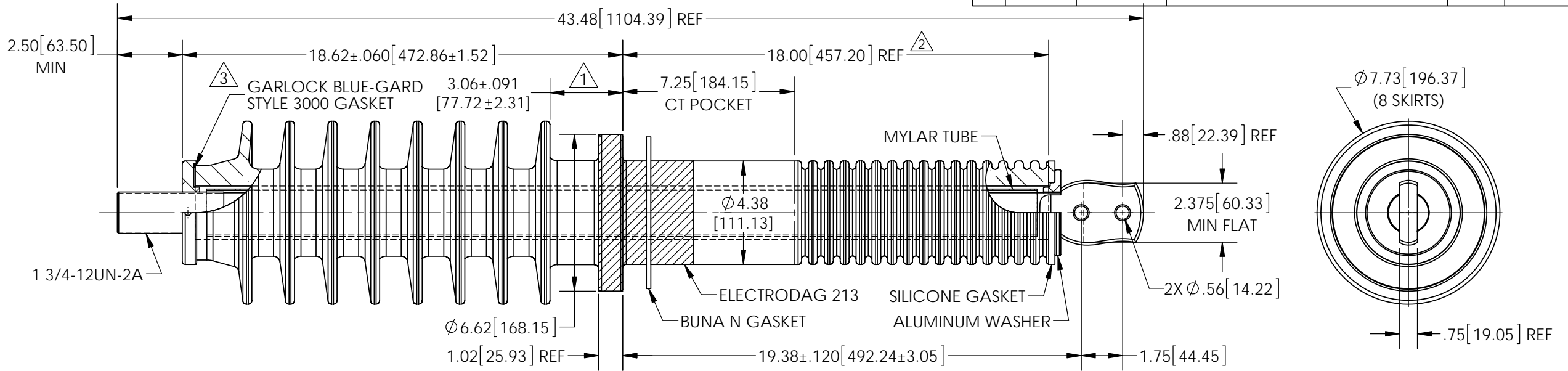
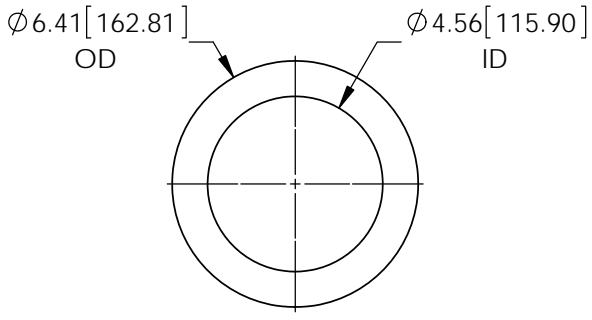


REVISIONS					
REV.	DATE	ECN #	DESCRIPTION	BY	APPROVED
1	12/18/13	HJ13-309	ADDED 3.06 DIM	CLS	BLB
2	4/25/2014	HJ14-073	MADE 18.00" DIM "REF".	BS	BLB
3	5/22/2015	HJ15-077	ADDED GASKET.	TJF	BLB



ROOF MOUNTING FLANGE
 REQ'D: 2 PER ASSY
 MAT'L: ALUMINUM



BUSHING TO ROOF GASKET
 REQ'D: 1 PER ASSY
 MAT'L: .19" ±.020" NITRILE BUNA N

- PORCELAIN NOTES:**
1. WET PROCESS ELECTRICAL PORCELAIN.
 2. GRAY GLAZE MUNSELL 5BG 7.0/0.4
 3. TOLERANCE ±3% WITH NOTHING LESS THAN ±.03, UNLESS NOTED ON DRAWING.
 4. MIN CREEPAGE:.....41.05" [1042.67] TOP
21.03" [534.16] BOTTOM
 5. MIN STRIKE DIST:.....15.60" [396.24] TOP
14.55" [369.57] BOTTOM
 6. TOP AND BOTTOM TERMINALS ARE TIN PLATED.

PROPRIETARY AND CONFIDENTIAL
 THE INFORMATION CONTAINED IN THIS DRAWING IS THE SOLE PROPERTY OF H-J ENTERPRISES, INC. ANY REPRODUCTION IN PART OR AS A WHOLE WITHOUT THE WRITTEN PERMISSION OF H-J ENTERPRISES, INC. IS PROHIBITED.

TOLERANCES (EXCEPT AS NOTED)

DECIMAL	+/- .032"/.8mm
FRACTIONAL	+/-
ANGULAR	+/- 2 Degrees



H - J ENTERPRISES, INC.
 3010 HIGH RIDGE BLVD. HIGH RIDGE, MO. 63049 USA
 PHONE 1-636-677-3421 FAX 1-636-376-1915

**38KV-200KV BIL BUSHING ASSEMBLY W/
 COPPER CONDUCTOR & 1 3/4-12 THRDS**

MATERIAL (SEE DRAWING)			
CHK'D	CJT	APP'D	4/25/14
DRAWN BY		DATE	DRAWING NO.
CLS		06/07/2013	AS1462-010
SCALE		N.T.S.	