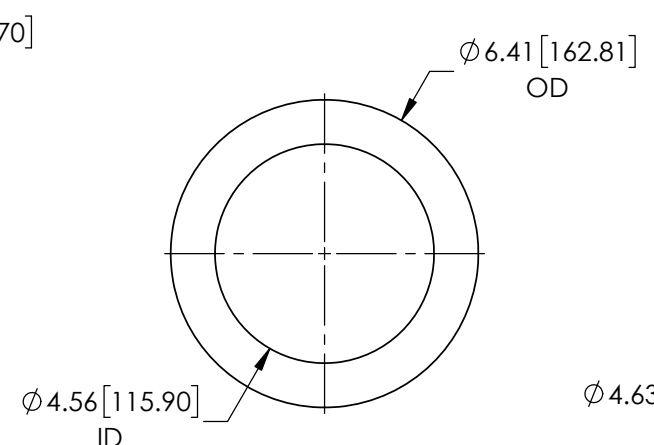
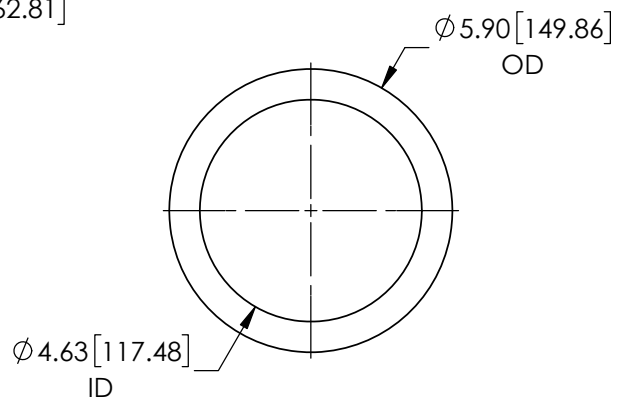


ROOF MOUNTING FLANGE
REQ'D: 2 PER ASSY
MAT'L: ALUMINUM

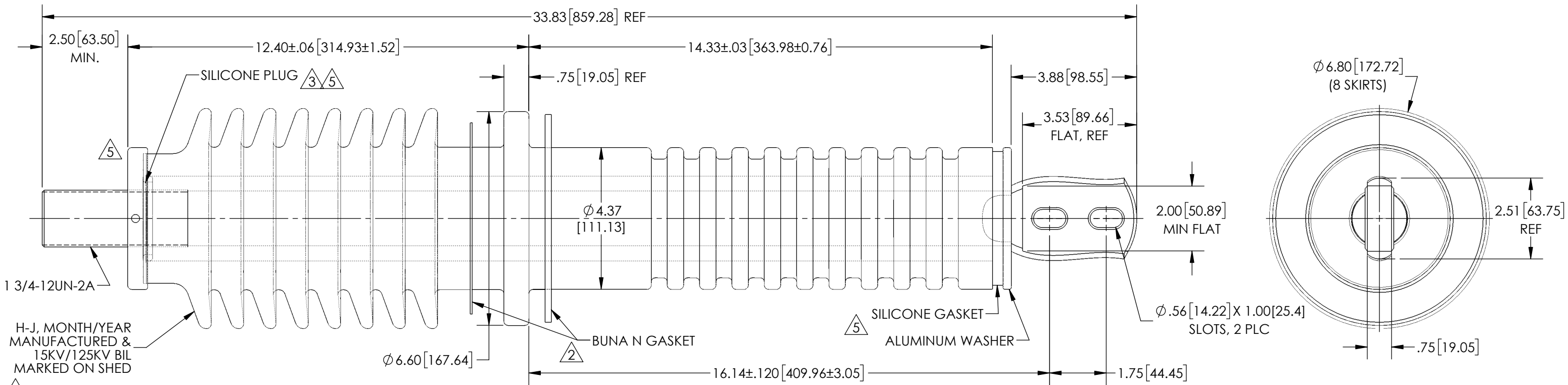


BUSHING TO ROOF GASKET
REQ'D: 1 PER ASSY
MAT'L: .19" ± .020 THK NITRILE BUNA N



FLANGE TO CLAMP GASKET $\triangle 2$
REQ'D: 1 PER ASSY
MAT'L: .063" ± .015 THK NITRILE BUNA N

REVISIONS					
REV.	DATE	ECN #	DESCRIPTION	BY	APP'D
1	7/05/07	HJ07-102	CHG'D RATING, WAS 15KV-125BIL	CJT	JM
2	9/26/07	HJ07-153	ADDED GASKET	SMM	JM
3	4/17/2015	HJ15-077	ADDED GASKET. ADDED LABEL NOTE. CHG'D SHT SIZE, B-TO-C. SW REDRAW.	TJF	BLB
4	2/29/2016	HJ16-028	REM LABEL NOTE. EDITED NOTE. REFORMATED DWG TO B-SIZE	TJF	BLB
5	8/7/2023	HJ23-165	REPLACED SEVERAL COMPONENTS	OAD	CJT

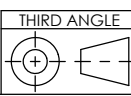


PORCELAIN NOTES:

1. WET PROCESS ELECTRICAL PORCELAIN
2. GRAY GLAZE MUNSELL 5BG 7.0/0.4
3. TOLERANCE ±3% WITH NOTHING LESS THAN ±.03, UNLESS OTHERWISE NOTED ON DRAWING
4. TOP & BOTTOM TERMINALS ARE TIN PLATED
5. FOR AIR-TO-AIR APPLICATION.
6. ELECTRICAL REQUIREMENTS
MINIMUM CREEPAGE: TOP - 24.50"
BOTTOM - 18.25"

DIELECTRIC:

- MAX KV.....15KV
FULL WAVE.....110KV BIL
60HZ WITHSTAND.....50KV DRY
45KV WET
- MAX KV.....27KV
FULL WAVE.....125KV BIL
60HZ WITHSTAND.....60KV DRY
50KV WET



TOLERANCES (EXCEPT AS NOTED)	
DECIMAL	± .032"/.8mm
FRACTIONAL	±
ANGULAR	± 2 Degrees



THE H-J FAMILY OF COMPANIES
3010 HIGH RIDGE BLVD. HIGH RIDGE, MO. 63049 USA
PHONE 1-636-677-3421 FAX 1-636-677-7808

15KV-110KV BIL/27KV-125KV BIL/2000A PORCELAIN BUSHING ASSEMBLY

MATERIAL SEE DRAWING

CHK'D CJT APP'D 8/7/23 DRAWING NO. AS1424-007
SCALE N.T.S.

PROPRIETARY AND CONFIDENTIAL
THE INFORMATION CONTAINED IN THIS DRAWING IS THE SOLE PROPERTY OF THE H-J FAMILY OF COMPANIES. ANY REPRODUCTION IN PART OR AS A WHOLE WITHOUT THE WRITTEN PERMISSION OF THE H-J FAMILY OF COMPANIES IS PROHIBITED.

DRAWN BY CJT DATE 6/27/07

$\triangle 4$ $\triangle 3$

$\triangle 4$ $\triangle 3$

$\triangle 4$ $\triangle 3$