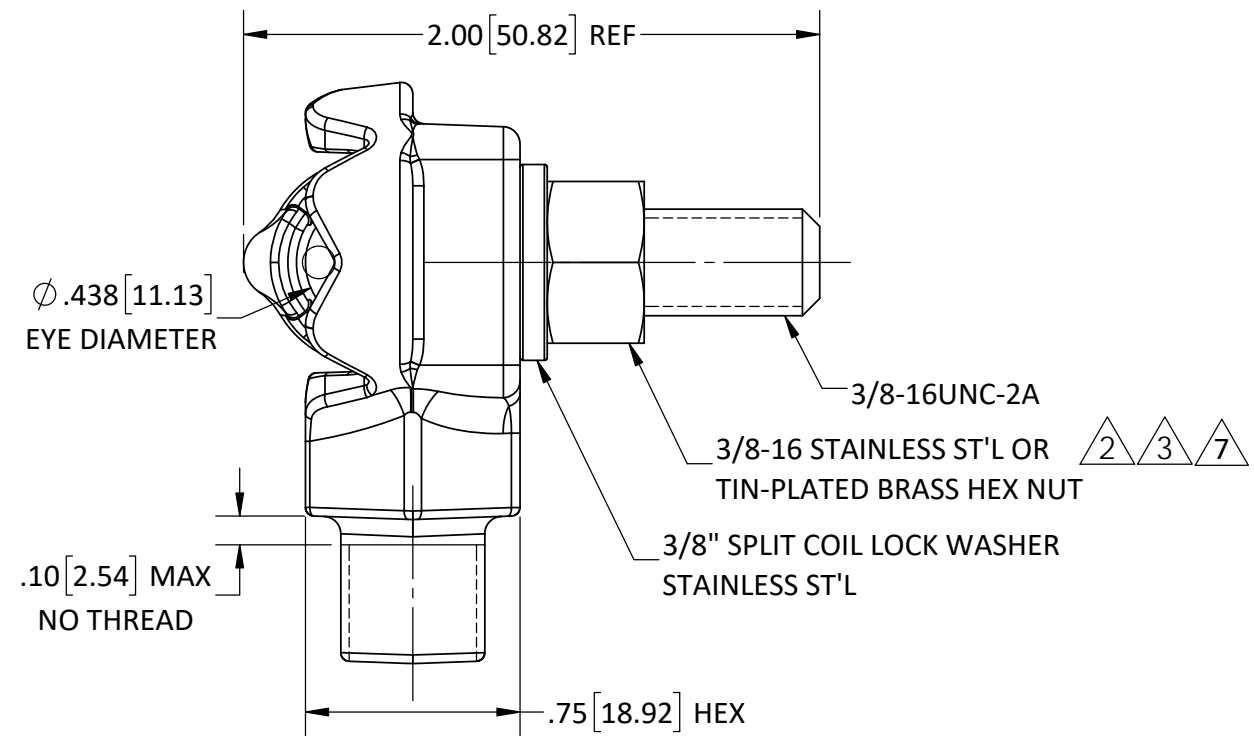
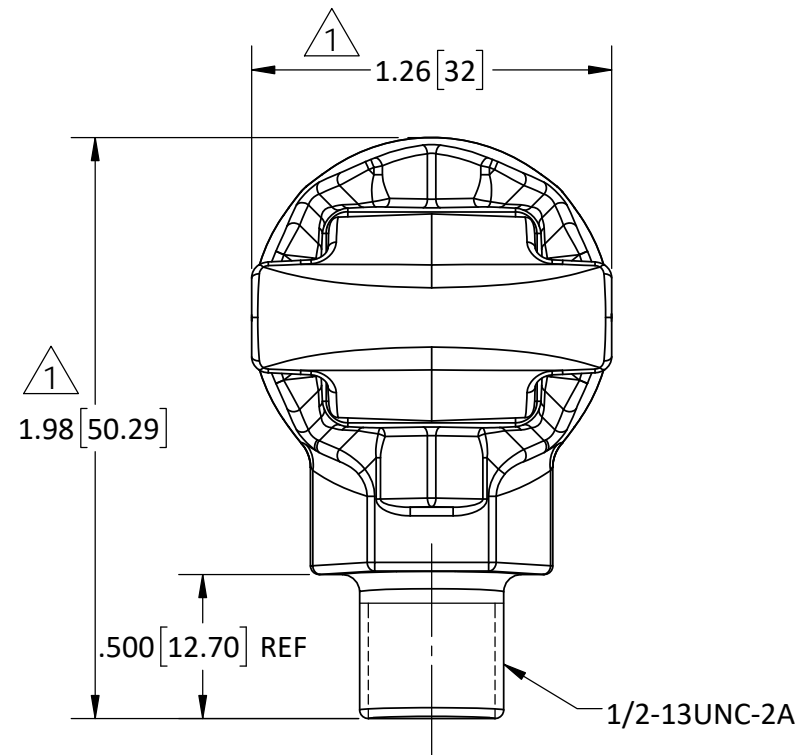


REVISIONS					
REV.	DATE	ECN #	DESCRIPTION	BY	APP'D
1	12/30/99		EDITED & ADDED DIMS	CJT	LHE
2	2/04/02	HJ01-231	REM TORQUE NOTE	CJT	LHE
3	12/8/08	HJ08-240	CHG'D HEX NUT MAT'L	CJT	JFS
4	3/8/13	HJ13-063	CHG'D TB MAT'L, WAS C84400	CJT	ABB
5	5/18/14	HJ14-051	CHG'D TB MAT'L	CJT	BLB
6	10/2/2015	HJ15-217	CHG'D DESCRPTION, WAS 2-WAY-TO-4-WAY. SW REDRAW	TJF	BLB
7	2/26/2019	HJ19-032	CORRECTED HEX NUT MAT'L CALLOUT, ADDED TIN-PLATED BRASS	TJF	LO



MATERIAL:

5
4
 BODY - BRASS - TIN PLATED
 EYEBOLT - C95500 - TIN PLATED

THIRD ANGLE PROJECTION 	TOLERANCES <small>(EXCEPT AS NOTED) DIMENSIONS ARE SHOWN IN: in/mm</small>		H - J ENTERPRISES, INC. <small>3010 HIGH RIDGE BLVD. HIGH RIDGE, MO. 63049 USA PHONE 1-636-677-3421 FAX 1-636-376-1915</small>	
	DECIMAL $\pm .032 / .8\text{mm}$		4-WAY GROUND TERMINAL ASSY, #8 SOL - 2/0 STR	
FRACTIONAL \pm	ANGULAR $\pm 2^\circ$	MATERIAL SEE DRAWING	CHK'D CJT APP'D 5/16/14 SCALE N.T.S.	DRAWING NO. AS1095-001
PROPRIETARY AND CONFIDENTIAL THE INFORMATION CONTAINED IN THIS DRAWING IS THE SOLE PROPERTY OF H-J ENTERPRISES, INC. ANY REPRODUCTION IN PART OR AS A WHOLE WITHOUT THE WRITTEN PERMISSION OF H-J ENTERPRISES, INC. IS PROHIBITED. REMOVE ALL BURRS & SHARP EDGES	DRAWN BY TLH	DATE 4/11/96	SCALE N.T.S.	DRAWING NO. AS1095-001