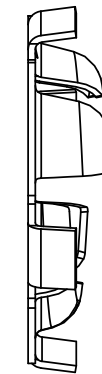
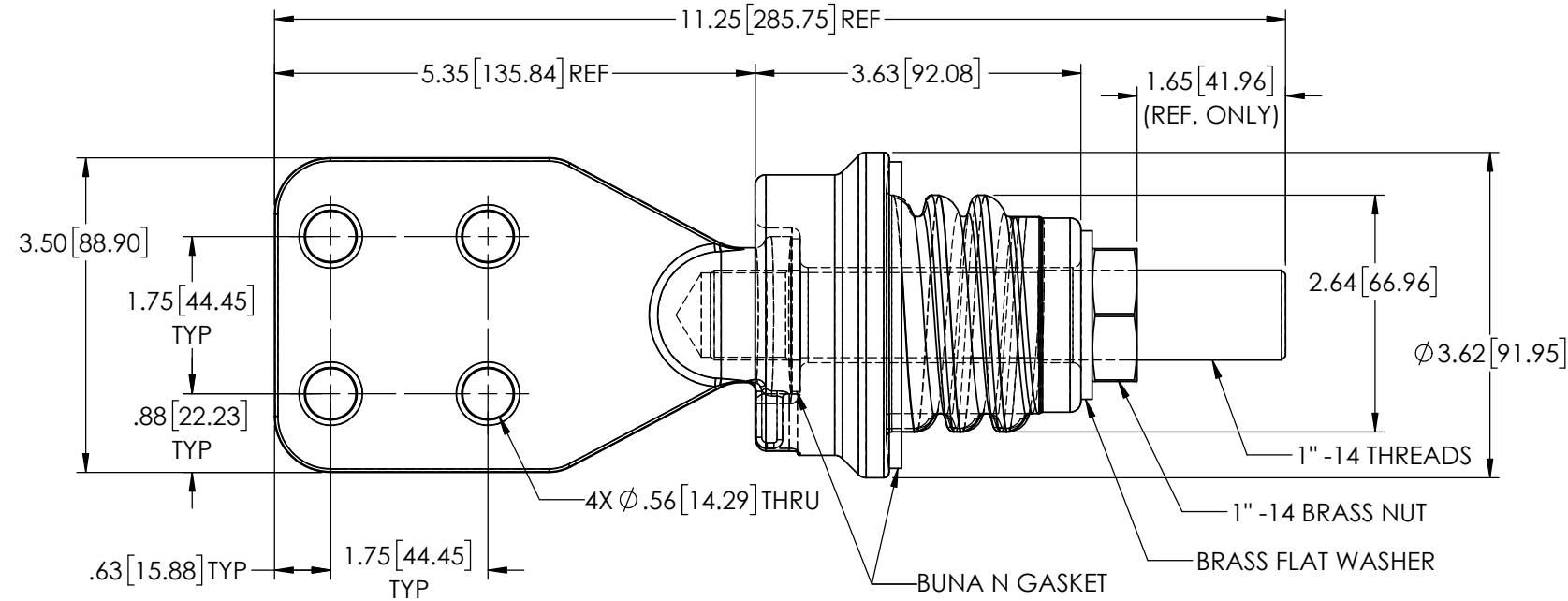
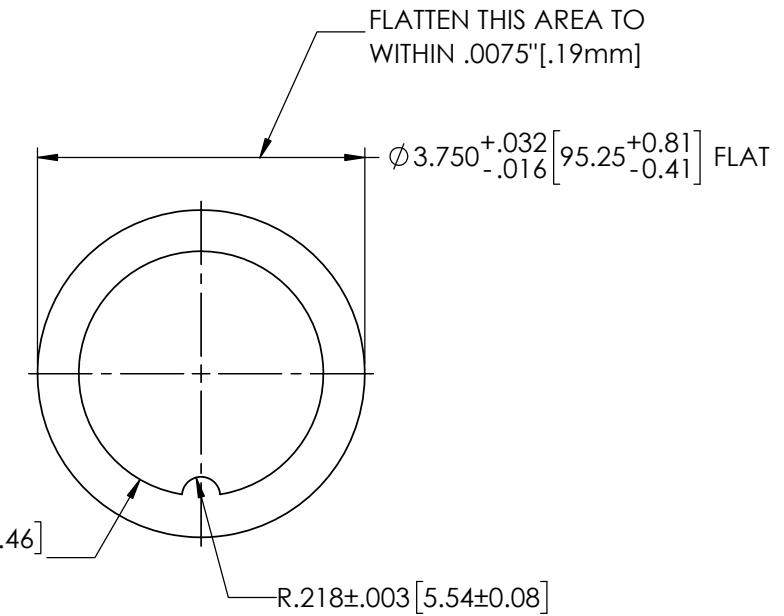


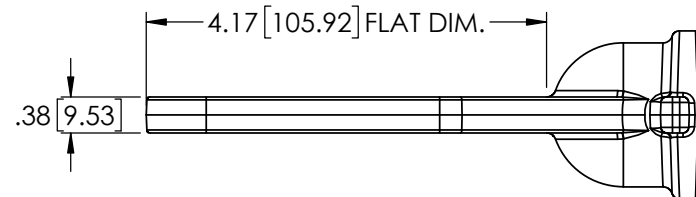
REVISIONS					
REV.	DATE	ECN #	DESCRIPTION	BY	APPROVED
1	2/4/02	HJ01-231	REMOVED TORQUE NOTE	CJT	LHE
2	4/25/2023	HJ23-084	ADDED SPEC. TABLE	OAD	CLS



STAINLESS STEEL SPIN-GRIP NUT



TANK HOLE DIMENSIONS



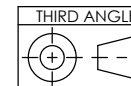
TECHNICAL CHARACTERISTICS

SPECIFICATIONS	VALUE	COMPONENTS	MATERIAL
NOMINAL VOLTAGE	1.2kV	INSULATOR	WET PROCESS PORCELAIN
NOMINAL CURRENT	1250A	CONDUCTOR	COPPER C11000
BASIC IMPULSE LEVEL (BIL)	30kV	TERMINAL	
RATED FREQUENCY WITHSTAND (DRY) - 60s	10kV	TOP	C84400, TIN PLATED
RATED FREQUENCY WITHSTAND (WET) - 10s	6kV	BOTTOM	COPPER C11000
CREEP DISTANCE		GASKET	NITRILE BUNA N
TOP	1.9" [48.3mm]	SPIN-GRIP NUT.....	STAINLESS STEEL
BOTTOM	N/A		
STRIKE DISTANCE			
TOP	1.6" [40.6mm]		
BOTTOM	N/A		
CANTILEVER OPERATING LOAD	625N		
CANTILEVER TEST LOAD	1250N		
PORCELAIN COLOR	GRAY - MUNSELL 5BG 7.0/0.4		
APPROXIMATE WEIGHT	5.6lb[2.5kg]		

NOTES:

- PORCELAIN TOLERANCE ±3% WITH NOTHING LESS THAN ±.03", UNLESS OTHERWISE NOTED.
- MOUNTING TYPE (INSTALLATION POSITIONING) - HORIZONTAL, INTERNAL SIDE UNDER OIL.
- INCLUDES 2 EXTRA HEX NUTS AND 2 EXTRA WASHERS.

2



TOLERANCES (EXCEPT AS NOTED)
DECIMAL
± .032"/.8mm
FRACTIONAL
±
ANGULAR
± 2 Degrees

PROPRIETARY AND CONFIDENTIAL
THE INFORMATION CONTAINED IN THIS DRAWING IS THE SOLE PROPERTY OF THE H-J FAMILY OF COMPANIES. ANY REPRODUCTION IN PART OR AS A WHOLE WITHOUT THE WRITTEN PERMISSION OF THE H-J FAMILY OF COMPANIES IS PROHIBITED.



THE H-J FAMILY OF COMPANIES
3010 HIGH RIDGE BLVD. HIGH RIDGE, MO. 63049 USA
PHONE 1-636-677-3421 FAX 1-636-677-7808

167/250 KVA SPADE BUSHING ASSEMBLY

MATERIAL SEE MATERIAL NOTE

CHK'D APP'D DRAWING NO.

DRAWN BY CJT

DATE 12/29/2000

SCALE N.T.S.

AS1051-009