

REVISIONS

REV.	DATE	ECN #	DESCRIPTION	BY	APPROVED
------	------	-------	-------------	----	----------

Physical Properties - Guaranteed Values

A = Window Height	284 mm (+3.0/-0)	11.18 in (+0.13/-0)
B = Window Width	65 mm (+3.0/-0)	2.56 in (+0.13/-0)
C = Leg Build	54 mm (max)	2.13 in (max)
D = Core Depth (incl. edge coating)	172 mm (max)	6.77 in (max)
R = Window Corner Radius	6.4 mm (+0/-1.5)	0.25 in (+0/-0.06)
Build at Joint	67.6 mm (max)	2.66 in (max)

Lap Type: F

Magnetic Properties - Guaranteed Values (at specified test conditions)

	60 Hz	50 Hz
Core Loss	10.3 W (max)	8.7 W (max)
Exciting Power	15.4 VA (max)	12.8 VA (max)

Test Conditions

Measurements taken at ambient temperature without oil impregnation at nominal 1.27 Tesla

Frequency	60 Hz	50 Hz
Volts per turn	2.73 V/turn	2.28 V/turn

Physical Properties - Nominal Values, for Reference Only

Ribbon Width	170 mm	6.7 in
Net Cross Sectional Area	80.8 cm ²	12.5 in ²
Space Factor	88 %	88 %
Core Weight (excl. edge coating)	51.2 kg	113 lbs

Material: METGLAS SA1 Transformer Core Alloy

***** NOTE: SUPPLY AS 4 PIECE SET, 2 PIECES OF EACH PAGE. *****

SJEMC
SAN JIANG ELECTRIC MFG. CO. LTD

Distributed Gap Core

Part#: 75kVA 9706
Core Type/Drawing#: 5L-284-65-54-170x1
Prepared By: Liuhui
Version: A
Date: 2018-3-29

TOLERANCES (EXCEPT AS NOTED)

DECIMAL	+/-
FRACTIONAL	+/-
ANGULAR	+/-

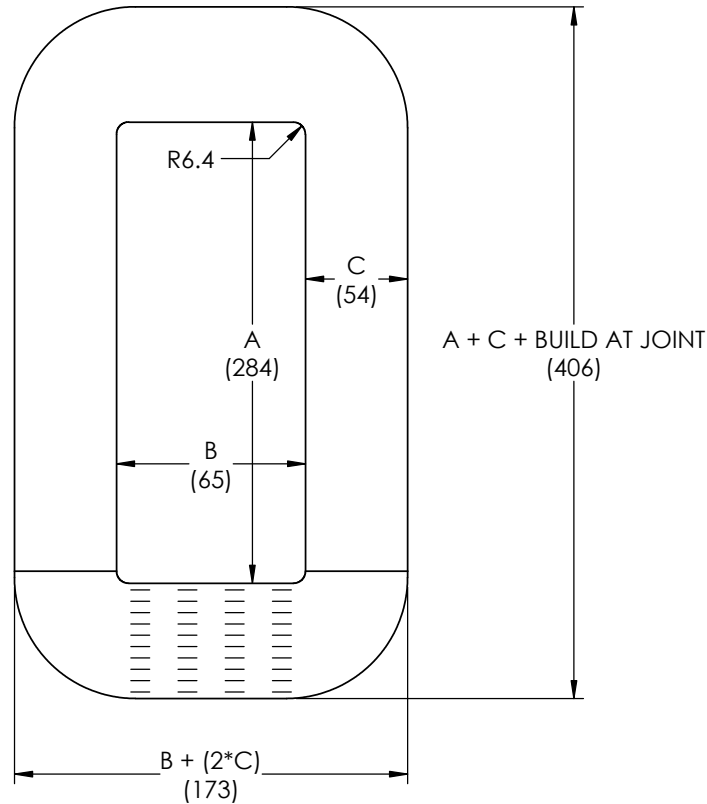


H - J ENTERPRISES, INC.
3010 HIGH RIDGE BLVD. HIGH RIDGE, MO. 63049 USA
PHONE 1-636-677-3421 FAX 1-636-376-1915

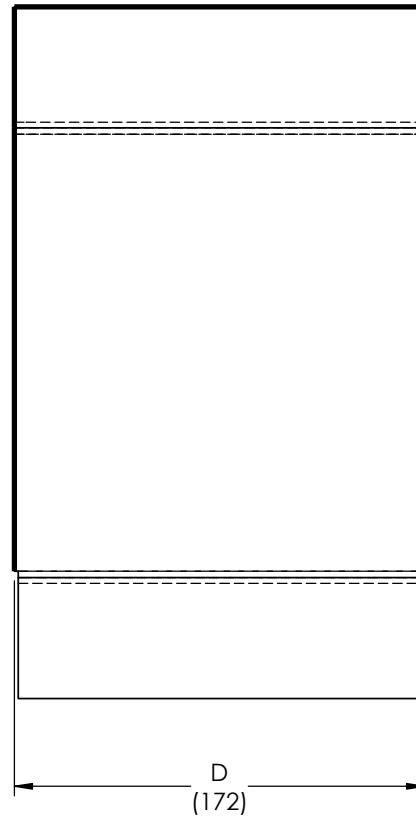
AMORPHOUS CORE (2 SETS OF 2 CORES)

MATERIAL SEE DRAWING

CHK'D -	APP'D -	DRAWING NO.
		AC2000-006



CURB TAPING



Drawing not to scale

Dimensions in mm

Joint laps are illustrative, actual number and spacing may vary

Customer Approval

Approved by: _____

Company: _____

PROPRIETARY AND CONFIDENTIAL

THE INFORMATION CONTAINED IN THIS DRAWING IS THE SOLE PROPERTY OF H-J ENTERPRISES, INC. ANY REPRODUCTION IN PART OR AS A WHOLE WITHOUT THE WRITTEN PERMISSION OF H-J ENTERPRISES, INC. IS PROHIBITED.

DRAWN BY CLS

DATE 04/16/2018

SCALE N.T.S.

REVISIONS

REV.	DATE	ECN #	DESCRIPTION	BY	APPROVED
------	------	-------	-------------	----	----------

Physical Properties - Guaranteed Values

A = Window Height	284 mm (+3.0/-0)	11.18 in (+0.13/-0)
B = Window Width	110 mm (+3.0/-0)	4.33 in (+0.13/-0)
C = Leg Build	54 mm (max)	2.13 in (max)
D = Core Depth (incl. edge coating)	172 mm (max)	6.77 in (max)
R = Window Corner Radius	6.4 mm (+0/-1.5)	0.25 in (+0/-0.06)
Build at Joint	65.2 mm (max)	2.57 in (max)

Lap Type: F

Magnetic Properties - Guaranteed Values (at specified test conditions)

	60 Hz	50 Hz
Core Loss	11.3 W (max)	9.6 W (max)
Exciting Power	17.0 VA (max)	14.2 VA (max)

Test Conditions

Measurements taken at ambient temperature without oil impregnation
at nominal 1.27 Tesla

Frequency	60 Hz	50 Hz
Volts per turn	2.73 V/turn	2.28 V/turn

Physical Properties - Nominal Values, for Reference Only

Ribbon Width	170 mm	6.7 in
Net Cross Sectional Area	80.8 cm ²	12.5 in ²
Space Factor	88 %	88 %
Core Weight (excl. edge coating)	56.4 kg	124 lbs

Material: METGLAS SA1 Transformer Core Alloy

***** NOTE: SUPPLY AS 4 PIECE SET, 2 PIECES OF EACH PAGE. *****

**SJEMC
SAN JIANG ELECTRIC MFG. CO. LTD**

Distributed Gap Core

Part#: 75kVA 9706
Core Type/Drawing#: 5L-284-110-54-170x1
Prepared By: Liuhui
Version: A
Date: 2018-3-29

TOLERANCES
(EXCEPT AS NOTED)

DECIMAL	+/-
FRACTIONAL	+/-
ANGULAR	+/-



H - J ENTERPRISES, INC.
3010 HIGH RIDGE BLVD. HIGH RIDGE, MO. 63049 USA
PHONE 1-636-677-3421 FAX 1-636-376-1915

AMORPHOUS CORE (2 SETS OF 2 CORES)

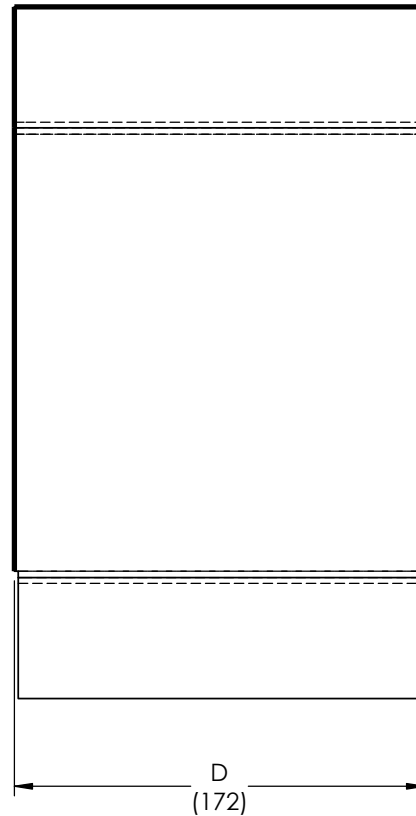
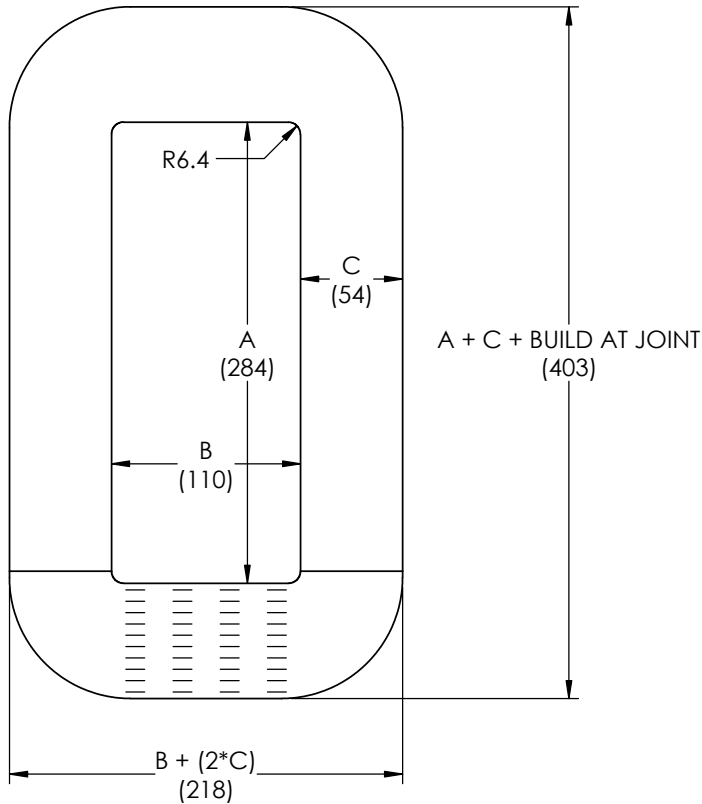
MATERIAL SEE DRAWING

CHK'D -	APP'D -	DRAWING NO.
		AC2000-006

DRAWN BY CLS DATE 04/16/2018

SCALE N.T.S.

CURB TAPING



Drawing not to scale

Dimensions in mm

Joint laps are illustrative, actual number and spacing may vary

Customer Approval

Approved by: _____

Company: _____

PROPRIETARY AND CONFIDENTIAL

THE INFORMATION CONTAINED IN THIS DRAWING IS THE SOLE PROPERTY OF H-J ENTERPRISES, INC. ANY REPRODUCTION IN PART OR AS A WHOLE WITHOUT THE WRITTEN PERMISSION OF H-J ENTERPRISES, INC. IS PROHIBITED.