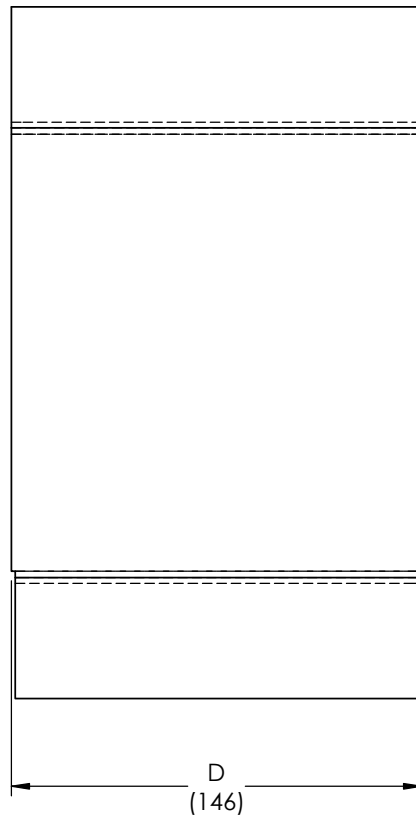
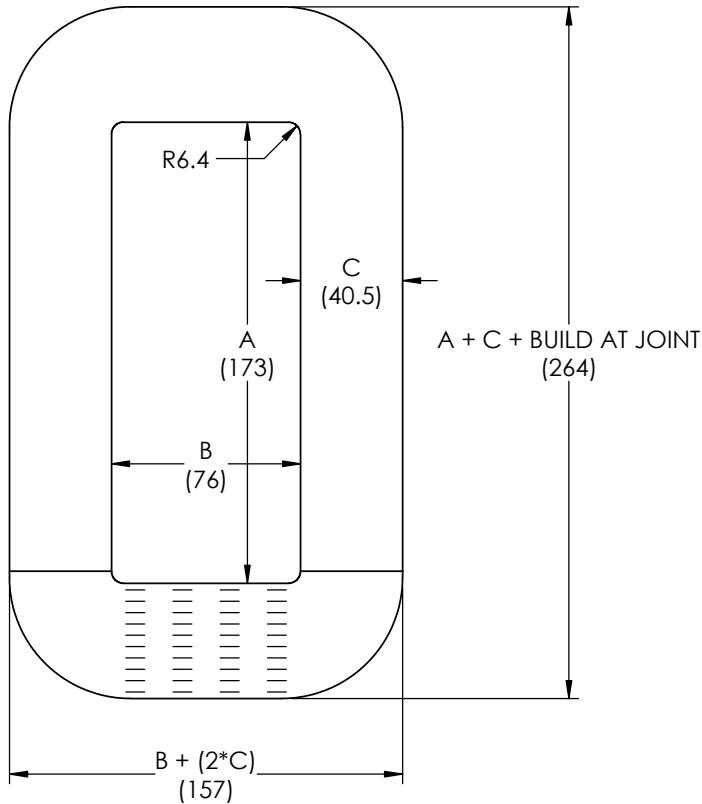


REVISIONS

REV.	DATE	ECN #	DESCRIPTION	BY	APPROVED
------	------	-------	-------------	----	----------



Drawing not to scale

Dimensions in mm

Joint laps are illustrative, actual number and spacing may vary

Physical Properties - Guaranteed Values

A = Window Height	173 mm (+3.0/-0)	6.81 in (+0.13/-0)
B = Window Width	76 mm (+3.0/-0)	2.99 in (+0.13/-0)
C = Leg Build	40.5 mm (max)	1.59 in (max)
D = Core Depth (incl. edge coating)	146 mm (max)	5.75 in (max)
R = Window Corner Radius	6.4 mm (+0/-1.5)	0.25 in (+0/-0.06)
Build at Joint	50.8 mm (max)	2.00 in (max)

Lap Type: F

Magnetic Properties - Guaranteed Values (at specified test conditions)

	60 Hz	50 Hz
Core Loss	5.8 W (max)	4.8 W (max)
Exciting Power	21.5 VA (max)	19.1 VA (max)

Test Conditions

Measurements taken at ambient temperature without oil impregnation

at nominal 1.3952 Tesla

Frequency	60 Hz	50 Hz
Volts per turn	1.88 V/turn	1.57 V/turn

Physical Properties - Nominal Values, for Reference Only

Ribbon Width	142 mm	5.6 in
Net Cross Sectional Area	50.6 cm ²	7.8 in ²
Space Factor	88 %	88 %
Core Weight (excl. edge coating)	23.8 kg	52 lbs

Material: METGLAS 2605HB1M Transformer Core Alloy

***** NOTE: TO BE SUPPLIED AS A TWO (2) CORE SET. *****

SJEMC
SAN JIANG ELECTRIC MFG. CO. LTD

Distributed Gap Core

Part#: 10kVA(20383LN01 Rev-1)

Core Type/Drawing#: 2L-173-76-40.5-142x1-HB1M Version: A

Prepared By: Shao Shuping

Date: 2018-11-30

TOLERANCES
(EXCEPT AS NOTED)

DECIMAL	+/-
FRACTIONAL	+/-
ANGULAR	+/-



H - J ENTERPRISES, INC.
 3010 HIGH RIDGE BLVD. HIGH RIDGE, MO. 63049 USA
 PHONE 1-636-677-3421 FAX 1-636-376-1915

AMORPHOUS CORE (2 CORE SET)

MATERIAL SEE DRAWING

CHK'D -	APP'D -
DRAWN BY CLS	DATE 12/04/2018
SCALE N.T.S.	

DRAWING NO.
AC1000-060

Customer Approval

Approved by: _____

Company: _____

PROPRIETARY AND CONFIDENTIAL

THE INFORMATION CONTAINED IN THIS DRAWING IS THE SOLE PROPERTY OF H-J ENTERPRISES, INC. ANY REPRODUCTION IN PART OR AS A WHOLE WITHOUT THE WRITTEN PERMISSION OF H-J ENTERPRISES, INC. IS PROHIBITED.