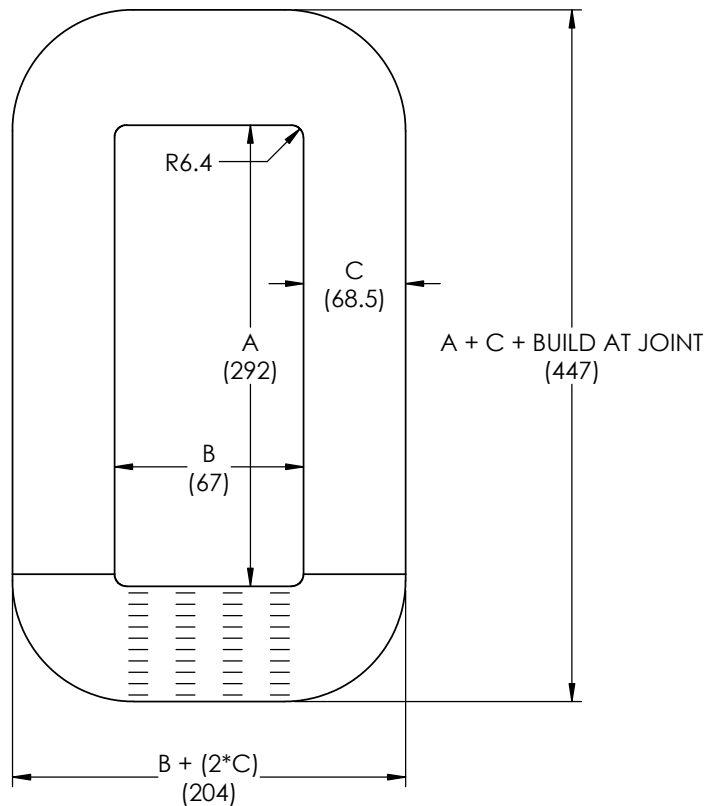
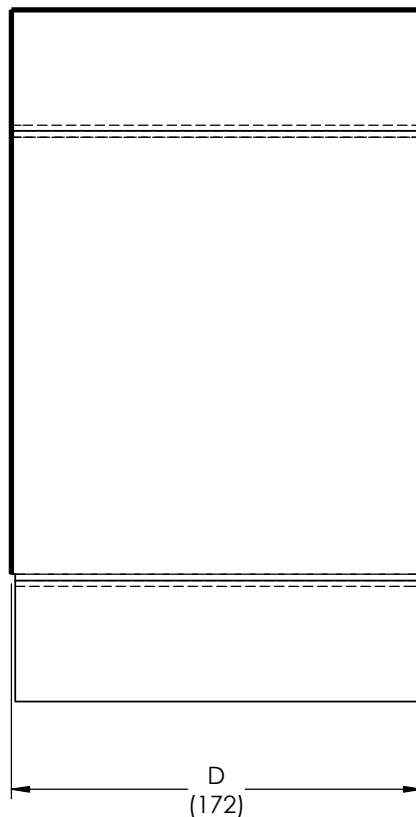


REVISIONS				
REV.	DATE	ECN #	DESCRIPTION	BY APPROVED



CURB TAPING



Drawing not to scale

Dimensions in mm

Joint laps are illustrative, actual number and spacing may vary

Physical Properties - Guaranteed Values

A = Window Height	292 mm (+3.0/-0)	11.50 in (+0.13/-0)
B = Window Width	67 mm (+3.0/-0)	2.64 in (+0.13/-0)
C = Leg Build	68.5 mm (max)	2.70 in (max)
D = Core Depth (incl. edge coating)	172 mm (max)	6.77 in (max)
R = Window Corner Radius	6.4 mm (+0/-1.5)	0.25 in (+0/-0.06)
Build at Joint	86.2 mm (max)	3.39 in (max)

Lap Type: F

Magnetic Properties - Guaranteed Values (at specified test conditions)

	60 Hz	50 Hz
Core Loss	18.7 W (max)	14.0 W (max)
Exciting Power	76.6 VA (max)	55.7 VA (max)

Test Conditions

Measurements taken at ambient temperature without oil impregnation
at nominal 1.3376 Tesla

Frequency	60 Hz	50 Hz
Volts per turn	3.65 V/turn	3.04 V/turn

Physical Properties - Nominal Values, for Reference Only

Ribbon Width	170 mm	6.7 in
Net Cross Sectional Area	102.5 cm ²	15.9 in ²
Space Factor	88 %	88 %
Core Weight (excl. edge coating)	69.5 kg	153 lbs

Material: METGLAS SA1 Transformer Core Alloy

***** NOTE: TO BE SUPPLIED AS A TWO (2) CORE SET. *****

SJEMC
SAN JIANG ELECTRIC MFG. CO. LTD

Distributed Gap Core

Part#: 37.5kVA 9701
Core Type/Drawing#: 2L-292-67-68.5-170x1
Prepared By: Liuhui
Version: A
Date: 2018-3-29

TOLERANCES
(EXCEPT AS NOTED)

DECIMAL	+/-
FRACTIONAL	+/-
ANGULAR	+/-



H - J ENTERPRISES, INC.
3010 HIGH RIDGE BLVD. HIGH RIDGE, MO. 63049 USA
PHONE 1-636-677-3421 FAX 1-636-376-1915

AMORPHOUS CORE (2 CORE SET)

MATERIAL SEE DRAWING

CHK'D -	APP'D -
DRAWN BY CLS	DATE 04/16/2018
SCALE N.T.S.	

DRAWING NO.
AC1000-057

Customer Approval

Approved by: _____

Company: _____

PROPRIETARY AND CONFIDENTIAL

THE INFORMATION CONTAINED IN THIS DRAWING IS THE SOLE PROPERTY OF H-J ENTERPRISES, INC. ANY REPRODUCTION IN PART OR AS A WHOLE WITHOUT THE WRITTEN PERMISSION OF H-J ENTERPRISES, INC. IS PROHIBITED.