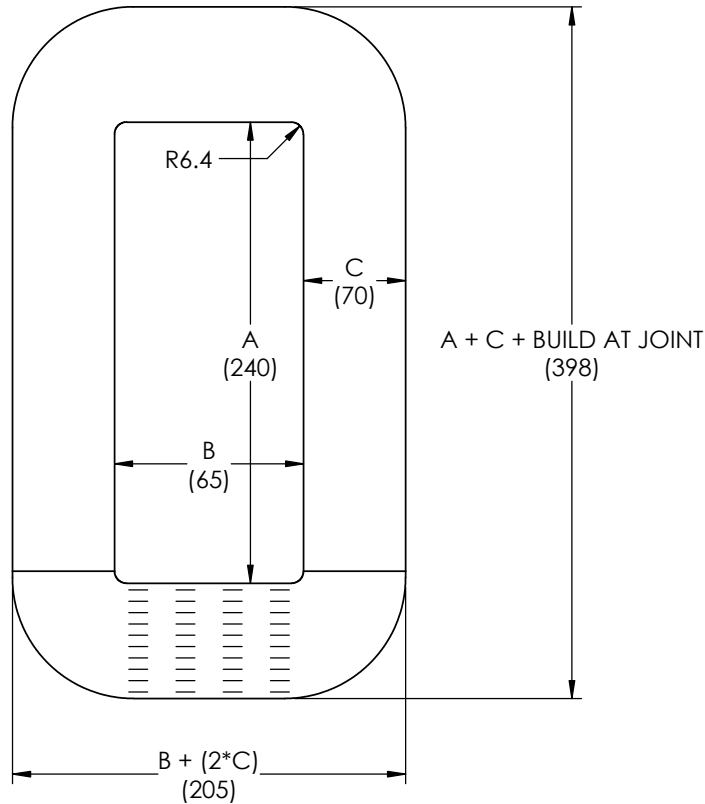
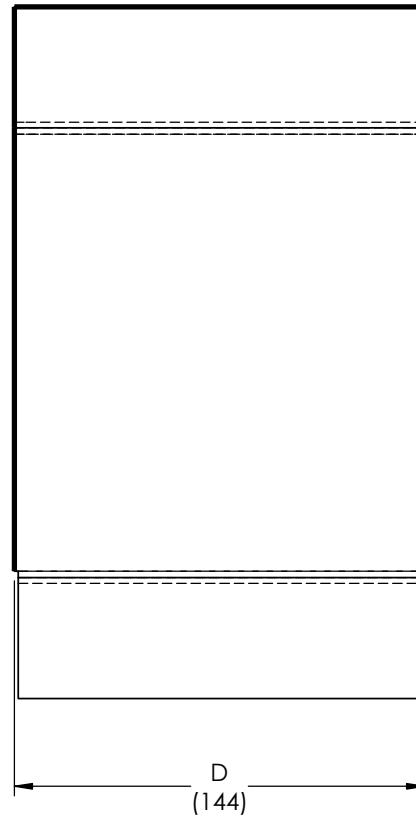


REVISIONS

REV.	DATE	ECN #	DESCRIPTION	BY	APPROVED
------	------	-------	-------------	----	----------



CURB TAPING



Drawing not to scale

Dimensions in mm

Joint laps are illustrative, actual number and spacing may vary

Physical Properties - Guaranteed Values

A = Window Height	240 mm (+3.0/-0)	9.45 in (+0.13/-0)
B = Window Width	65 mm (+3.0/-0)	2.56 in (+0.13/-0)
C = Leg Build	70 mm (max)	2.76 in (max)
D = Core Depth (incl. edge coating)	144 mm (max)	5.67 in (max)
R = Window Corner Radius	6.4 mm (+0/-1.5)	0.25 in (+0/-0.06)
Build at Joint	87.7 mm (max)	3.45 in (max)

Lap Type: F

Magnetic Properties - Guaranteed Values (at specified test conditions)

	60 Hz	50 Hz
Core Loss	12.2 W (max)	10.6 W (max)
Exciting Power	58.3 VA (max)	42.4 VA (max)

Test Conditions

Measurements taken at ambient temperature without oil impregnation at nominal 1.332 Tesla

Frequency	60 Hz	50 Hz
Volts per turn	3.10 V/turn	2.59 V/turn

Physical Properties - Nominal Values, for Reference Only

Ribbon Width	142 mm	5.6 in
Net Cross Sectional Area	87.5 cm ²	13.6 in ²
Space Factor	88 %	88 %
Core Weight (excl. edge coating)	52.9 kg	117 lbs

Material: METGLAS SA1 Transformer Core Alloy

***** NOTE: TO BE SUPPLIED AS A TWO (2) CORE SET. *****

SJEMC
SAN JIANG ELECTRIC MFG. CO. LTD

Distributed Gap Core

Part#: 25kVA 9700
Core Type/Drawing#: 2L-240-65-70-142x1
Prepared By: Liuhui
Version: A
Date: 2018-3-29

TOLERANCES (EXCEPT AS NOTED)

DECIMAL	+/-
FRACTIONAL	+/-
ANGULAR	+/-



H - J ENTERPRISES, INC.
3010 HIGH RIDGE BLVD. HIGH RIDGE, MO. 63049 USA
PHONE 1-636-677-3421 FAX 1-636-376-1915

AMORPHOUS CORE (2 CORE SET)

MATERIAL SEE DRAWING

CHK'D -	APP'D -	DRAWING NO.
		AC1000-056

DRAWN BY CLS DATE 04/16/2018

SCALE N.T.S.

Customer Approval

Approved by: _____

Company: _____

PROPRIETARY AND CONFIDENTIAL

THE INFORMATION CONTAINED IN THIS DRAWING IS THE SOLE PROPERTY OF H-J ENTERPRISES, INC. ANY REPRODUCTION IN PART OR AS A WHOLE WITHOUT THE WRITTEN PERMISSION OF H-J ENTERPRISES, INC. IS PROHIBITED.